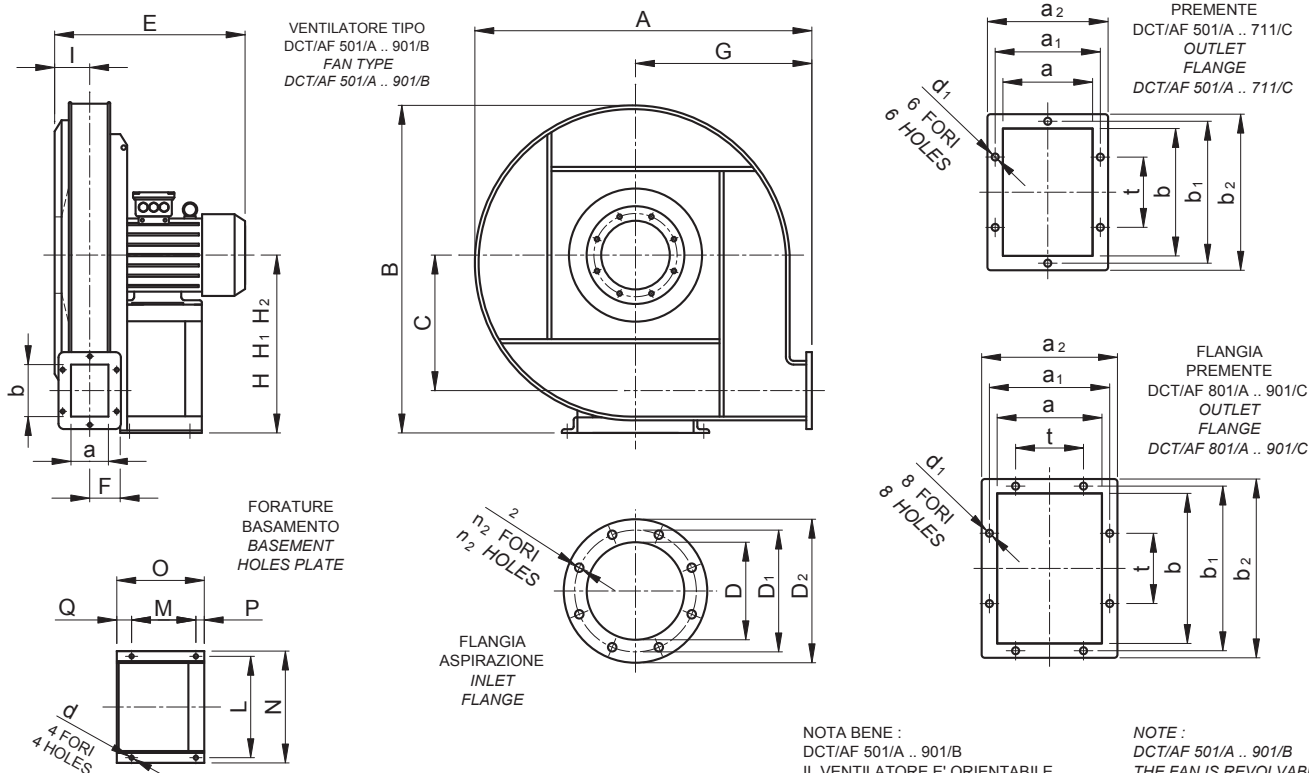
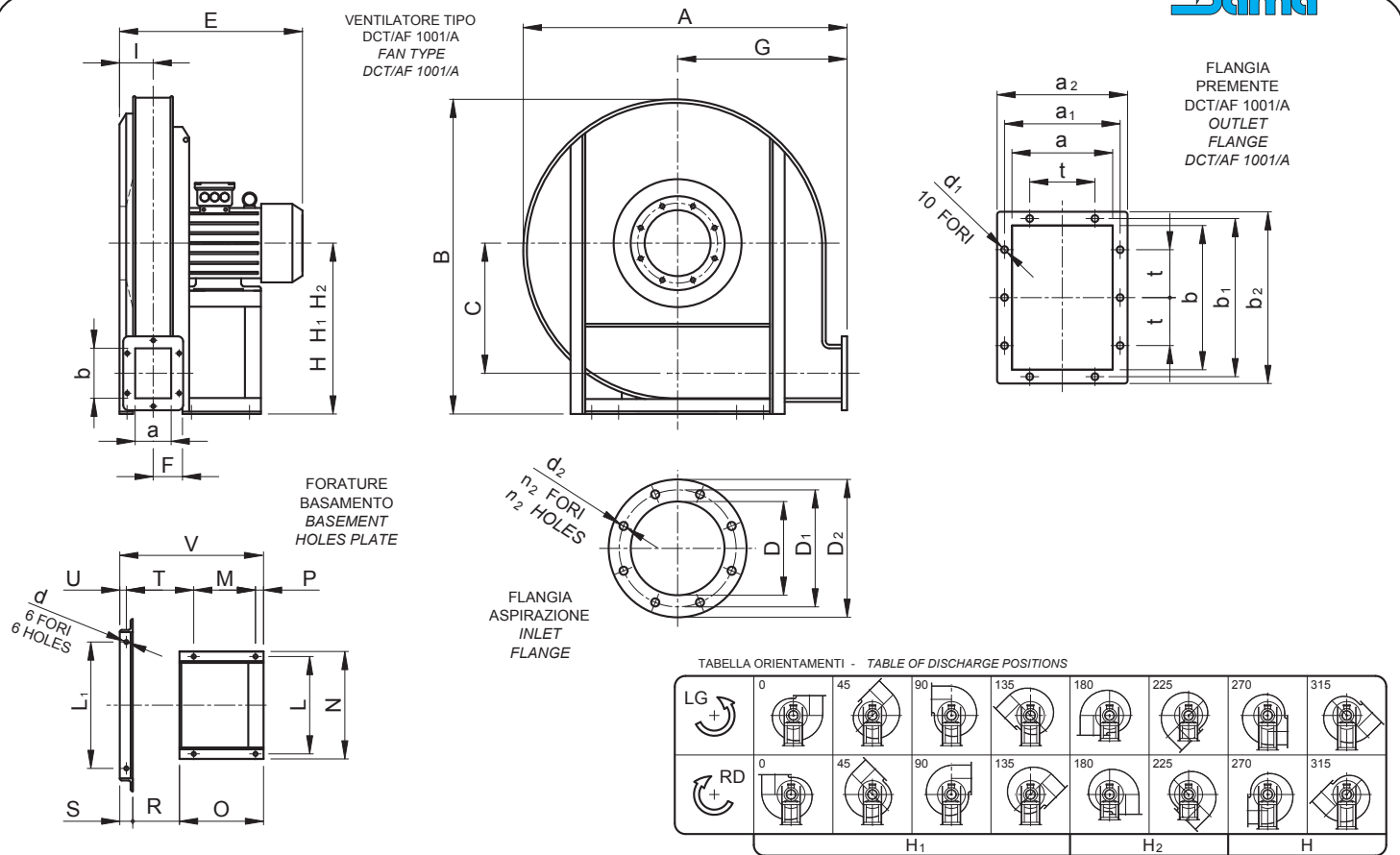


MODELLO DCT/AF - DIMENSIONI DI INGOMBRO
MODEL DCT/AF - OVERALL DIMENSIONS



Ventilatore Tipo Fan Type	Motore Motor g/1' rpm	kW inst.	Ventilatore Fan									Basamento Basement													
			A	B	C	E	F	G	H	H ₁	H ₂	I	L	M	N	O	P	Q	L ₁	R	S	T	U	V	d
DCT/AF 501/A	2850	2.2				405						245	137	270	215	18	60	-	-	-	-	-	-	10	
DCT/AF 501/B	2900	3	730	795	337	475	53	355	450	450	355	59	300	200	332	260	25	35	-	-	-	-	-	12	
DCT/AF 561/A	2900	3				490																			12
DCT/AF 561/B	2900	4	830	890	380	490	58	400	500	500	400	65	300	200	332	260	25	35	-	-	-	-	-	12	
DCT/AF 631/A	2900	5.5				565																			12
DCT/AF 631/B	2900	7.5	895	990	420	565	63	425	560	560	425	71	360	250	392	320	25	45	-	-	-	-	-	12	
DCT/AF 711/A	2900	9.2				590																			12
DCT/AF 711/B	2950	11	1005	1115	470	725	71	475	630	630	475	80	400	305	440	380	30	45	-	-	-	-	-	14	
DCT/AF 711/C	2950	15				725																			14
DCT/AF 801/A	2950	15				740																			14
DCT/AF 801/B	2950	18.5				740																			14
DCT/AF 801/C	2950	22	1120	1250	530	815	80	530	710	710	530	90	450	370	500	470	35	65	-	-	-	-	-	14	
DCT/AF 801/D	1450	3				545																			12
DCT/AF 801/E	1450	4				545																			12
DCT/AF 901/A	1450	5.5				630																			12
DCT/AF 901/B	1450	7.5	1265	1410	598	630	90	660	800	710	600	103	360	250	392	320	25	45	-	-	-	-	-	12	
DCT/AF 1001/A	1450	11	1410	1570	675	795	100	670	900	800	670	112	400	340	440	425	30	-	630	195	60	280	30	680	14



Ventilatore Tipo Fan Type	Flangia aspirazione Inlet flange					Flangia premente Outlet flange									Peso Weight kg
	D	D ₁	D ₂	d ₂	n ₂	a	b	a ₁	b ₁	a ₂	b ₂	d ₁	n fori n holes	t	
DCT/AF 501/A	165	200	235	11.5	8	90	125	130	165	150	185	9.5	6	100	60
DCT/AF 501/B															68
DCT/AF 561/A	185	219	255	11.5	8	100	140	141	182	170	210	11.5	6	112	82
DCT/AF 561/B															88
DCT/AF 631/A	205	241	275	11.5	8	112	160	153	200	182	230	11.5	6	112	115
DCT/AF 631/B															122
DCT/AF 711/A	229	265	299	11.5	8	125	180	167	219	195	250	11.5	6	112	150
DCT/AF 711/B															190
DCT/AF 711/C															210
DCT/AF 801/A	255	292	325	11.5	8	140	200	182	241	210	270	11.5	8	112	280
DCT/AF 801/B															305
DCT/AF 801/C															335
DCT/AF 801/D															220
DCT/AF 801/E															225
DCT/AF 901/A	286	332	366	11.5	8	160	224	200	265	230	294	11.5	8	112	330
DCT/AF 901/B															340
DCT/AF 1001/A	321	366	401	11.5	8	180	250	219	292	250	320	11.5	10	112	475

ELETTROVENTILATORI SERIE DCT/AF - CARATTERISTICHE IN MANDATA
ELECTRICAL FANS MODEL DCT/AF - DELIVERY CHARACTERISTICS

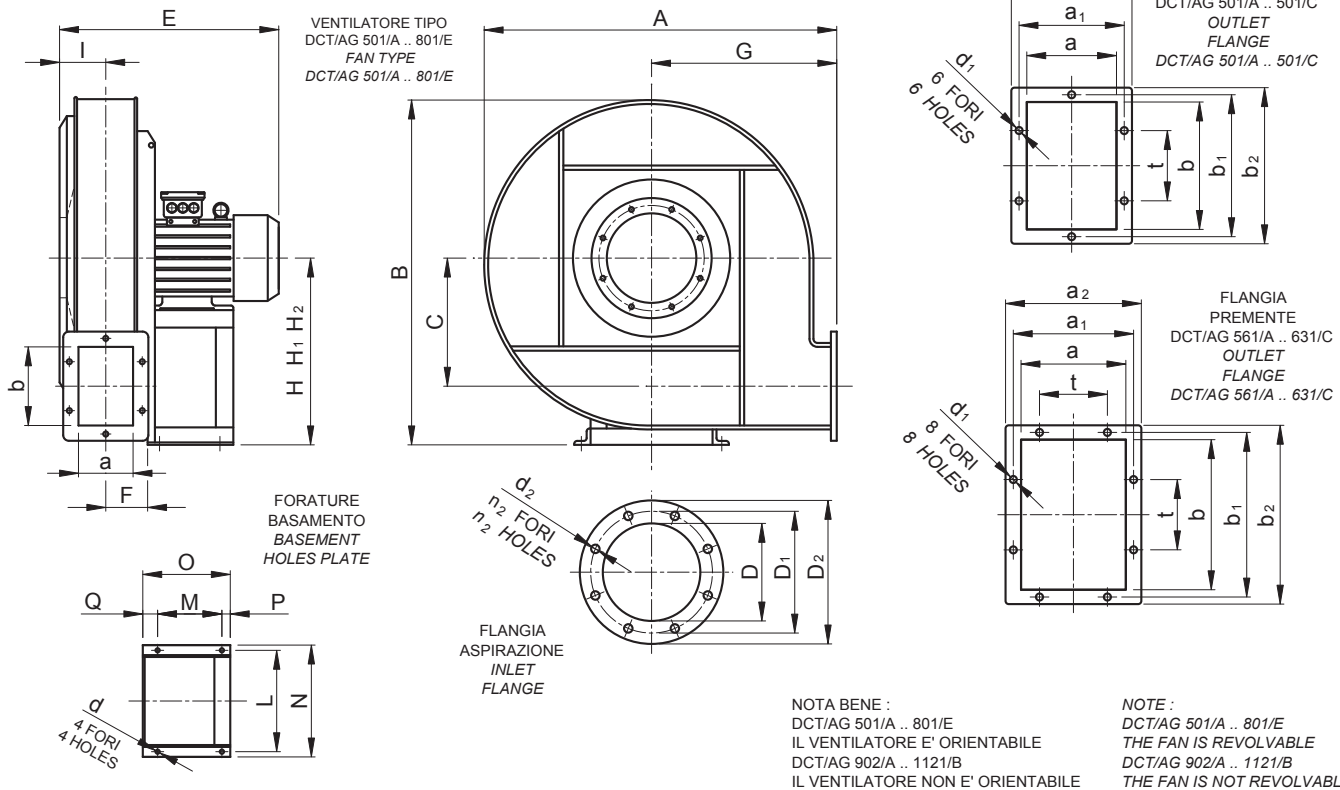
DCT/AF

Ventilatore tipo Fan type	g/1' rpm	kW inst.	dB(A)	Portata d'aria - Air capacity (m ³ /h)																												
				Pressione totale - Total pressure (mm H ₂ O)																												
				180	240	300	336	378	426	480	540	600	720	840	960	1080	1200	1320	1500	1680	1860	2100	2400	2700	3000	3360	3780	4260	4800			
DCT/AF 501/A	2850	2.2	82	460	460	465	465	465	465	465	465	465	465	465	465	465	465	460	-	-	-	-	-	-	-	-	-					
DCT/AF 501/B	2900	3	83	460	460	465	465	465	465	465	465	465	465	465	465	465	465	460	445	440	430	410	405	-	-	-	-					
DCT/AF 561/A	2900	3	85	-	-	585	585	590	590	590	595	595	595	595	595	595	590	-	-	-	-	-	-	-	-	-	-					
DCT/AF 561/B	2900	4	85	-	-	585	585	590	590	595	595	595	595	595	595	590	590	585	580	575	565	-	-	-	-	-	-					
DCT/AF 631/A	2900	5.5	89	-	-	-	-	-	-	720	725	730	730	730	735	735	735	735	735	735	730	-	-	-	-	-	-					
DCT/AF 631/B	2900	7.5	89	-	-	-	-	-	-	720	725	730	730	730	735	735	735	735	735	735	730	725	720	705	695	-	-					
DCT/AF 711/A	2900	9.2	91	-	-	-	-	-	-	-	-	-	-	-	-	-	940	945	945	950	950	950	-	-	-	-	-					
DCT/AF 711/B	2950	11	92	-	-	-	-	-	-	-	-	-	-	-	-	-	940	945	945	950	950	950	950	945	935	-	-					
DCT/AF 711/C	2950	15	92	-	-	-	-	-	-	-	-	-	-	-	-	-	940	945	945	950	950	950	950	945	935	925	905	880	850			
DCT/AF 801/A	2950	15	94	-	-	-	-	-	-	-	-	-	-	-	-	-	-	-	1180	1185	1190	1195	1200	1200	1200	-	-	-	-			
DCT/AF 801/B	2950	18.5	95	-	-	-	-	-	-	-	-	-	-	-	-	-	-	-	1180	1185	1190	1195	1200	1200	1200	1200	1190	-	-	-		
DCT/AF 801/C	2950	22	96	-	-	-	-	-	-	-	-	-	-	-	-	-	-	-	1180	1185	1190	1195	1200	1200	1200	1200	1190	1175	1150	-		
DCT/AF 801/D	1450	3	78	-	-	-	-	-	-	-	-	-	-	-	-	-	275	275	275	270	270	265	265	260	255	-	-	-	-	-		
DCT/AF 801/E	1450	4	79	-	-	-	-	-	-	-	-	-	-	-	-	-	275	275	275	270	270	265	265	260	255	245	-	-	-	-		
DCT/AF 901/A	1450	5.5	81	-	-	-	-	-	-	-	-	-	-	-	-	-	-	355	355	355	350	350	350	345	340	335	325	-	-	-		
DCT/AF 901/B	1450	7.5	82	-	-	-	-	-	-	-	-	-	-	-	-	-	-	355	355	355	350	350	350	345	340	335	325	320	310	-	-	
DCT/AF 1001/A	1450	11	85	-	-	-	-	-	-	-	-	-	-	-	-	-	-	-	-	440	440	440	440	435	430	425	415	410	405	400	395	385

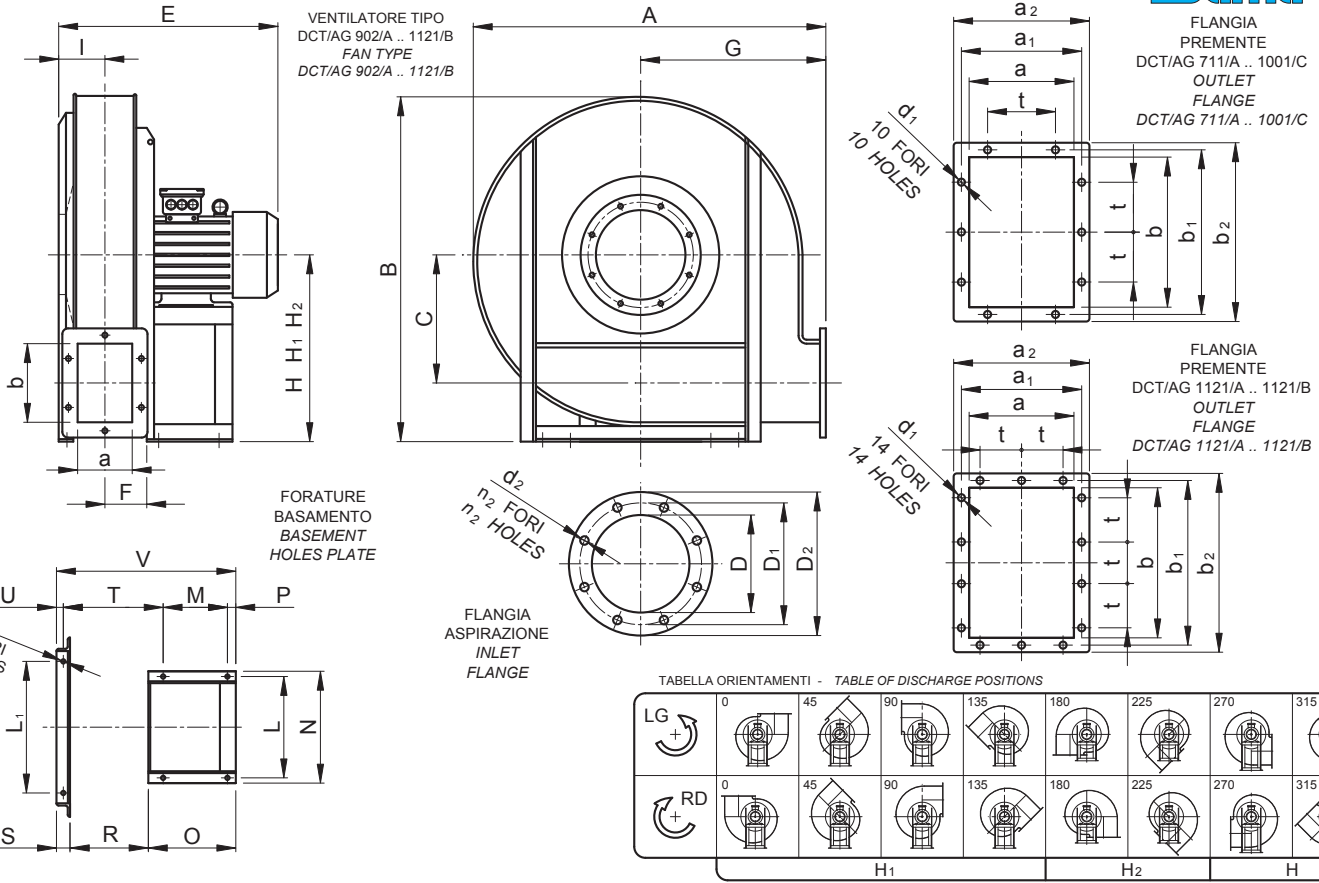
ELETTROVENTILATORI SERIE DCT/AF - CARATTERISTICHE IN ASPIRAZIONE
ELECTRICAL FANS MODEL DCT/AF - SUCKING CHARACTERISTICS

Ventilatore tipo Fan type	g/1' rpm	kW inst.	dB(A)	Portata d'aria - Air capacity (m ³ /h)																							
				Pressione totale - Total pressure (mm H ₂ O)																							
				180	240	300	336	378	426	480	540	600	720	840	960	1080	1200	1320	1500	1680	1860	2100	2400	2700	3000	3360	3780
DCT/AF 501/A	2850	2.2	84	440	440	445	445	445	445	445	455	455	455	455	440	440	435	-	-	-	-	-	-	-	-	-	-
DCT/AF 501/B	2900	3	85	440	440	445	445	445	445	455	455	455	455	440	440	435	420	400	390	-	-	-	-	-	-	-	-
DCT/AF 561/A	2900	3	87	-	-	550	550	555	555	560	560	560	560	555	-	-	-	-	-	-	-	-	-	-	-	-	-
DCT/AF 561/B	2900	4	87	-	-	550	550	555	555	560	560	560	555	555	550	550	545	540	-	-	-	-	-	-	-	-	-
DCT/AF 631/A	2900	5.5	91	-	-	-	-	-	670	675	680	685	690	690	690	685	685	680	-	-	-	-	-	-	-	-	-
DCT/AF 631/B	2900	7.5	91	-	-	-	-	670	670	675	680	685	690	690	690	685	685	675	670	655	640	-	-	-	-	-	-
DCT/AF 711/A	2900	9.2	93	-	-	-	-	-	-	-	-	-	855	860	860	860	860	860	-	-	-	-	-	-	-	-	-
DCT/AF 711/B	2950	11	94	-	-	-	-	-	-	-	-	-	855	860	860	860	860	860	855	850	-	-	-	-	-	-	-
DCT/AF 711/C	2950	15	94	-	-	-	-	-	-	-	-	-	855	860	860	860	860	860	855	850	840	825	805	780	-	-	-
DCT/AF 801/A	2950	15	96	-	-	-	-	-	-	-	-	-	-	-	-	1040	1045	1050	1055	1055	-	-	-	-	-	-	-
DCT/AF 801/B	2950	18.5	97	-	-	-	-	-	-	-	-	-	-	-	-	1040	1045	1050	1055	1055	1055	1055	1055	1045	-	-	-
DCT/AF 801/C	2950	22	98	-	-	-	-	-	-	-	-	-	-	-	-	1040	1045	1050	1055	1055	1055	1055	1055	1045	1030	1010	-
DCT/AF 801/D	1450	3	80	-	-	-	-	-	-	-	-	260	260	260	260	260	260	260	255	250	-	-	-	-	-	-	-
DCT/AF 801/E	1450	4	81	-	-	-	-	-	-	-	-	260	260	260	260	260	260	260	255	245	240	-	-	-	-	-	-
DCT/AF 901/A	1450	5.5	83	-	-	-	-	-	-	-	-	-	-	-	330	330	330	330	325	320	315	-	-	-	-	-	-
DCT/AF 901/B	1450	7.5	84	-	-	-	-	-	-	-	-	-	-	-	330	330	330	330	325	320	315	315	310	305	-	-	-
DCT/AF 1001/A	1450	11	87	-	-	-	-	-	-	-	-	-	-	-	-	410	410	410	410	410	405	405	400	395	390	385	375

MODELLO DCT/AG - DIMENSIONI DI INGOMBRO
MODEL DCT/AG - OVERALL DIMENSIONS



Ventilatore Tipo Fan Type	Motore Motor		Ventilatore Fan									Basamento Basement															
	g/1' rpm	kW inst.	A	B	C	E	F	G	H	H ₁	H ₂	I	L	M	N	O	P	Q	L ₁	R	S	T	U	V	d		
DCT/AG 501/A	2900	4				510							300	200	332	260	25	35									12
DCT/AG 501/B	2900	5.5	730	795	310	570	70	355	450	450	355	75	360	250	392	320	25	45	-	-	-	-	-	-	-	-	12
DCT/AG 501/C	2900	7.5				570							360	250	392	320	25	45									12
DCT/AG 561/A	2900	7.5				595							360	250	392	320	25	45									12
DCT/AG 561/B	2900	9.2	825	895	350	595	79	400	500	500	400	86	360	250	392	320	25	45	-	-	-	-	-	-	-	-	12
DCT/AG 561/C	2950	11				730							400	305	440	380	30	45									14
DCT/AG 561/D	2950	15				730							400	305	440	380	30	45									14
DCT/AG 631/A	2950	11				750							400	305	440	380	30	45									14
DCT/AG 631/B	2950	15	895	990	390	750	89	425	560	560	425	100	400	305	440	380	30	45	-	-	-	-	-	-	-	-	14
DCT/AG 631/C	2950	18.5				750							400	340	440	425	30	55									14
DCT/AG 711/A	2950	22				780							450	370	500	470	35	65									14
DCT/AG 711/B	2950	30	1005	1115	435	855	100	475	630	630	475	110	510	385	570	500	40	75	-	-	-	-	-	-	-	-	16
DCT/AG 711/C	2950	37				855							510	385	570	500	40	75									16
DCT/AG 801/A	2950	37				875							510	385	570	500	40	75									16
DCT/AG 801/B	2950	45				950							565	425	626	550	40	85									19
DCT/AG 801/C	2950	55	1120	1250	490	950	110	530	710	710	530	120	615	460	686	600	45	95	-	-	-	-	-	-	-	-	21
DCT/AG 801/D	1450	5.5				665							360	250	392	320	25	45									12
DCT/AG 801/E	1450	7.5				665							360	250	392	320	25	45									12
DCT/AG 901/A	1450	11	1265	1410	552	835	120	600	800	710	600	135	400	340	440	425	30	-	560	235	60	320	30	720	14	14	
DCT/AG 901/B	1450	15				835							400	340	440	425	30	-	560	235	60	320	30	720	14	14	
DCT/AG 1001/A	1450	15				865							400	340	440	425	30	-	630	265	60	350	30	750	14	14	
DCT/AG 1001/B	1450	18.5	1410	1570	622	865	136	670	900	800	670	148	450	370	500	425	35	-	630	265	60	360	30	795	14	14	
DCT/AG 1001/C	1450	22				940							450	370	500	470	35	-	630	265	60	360	30	795	14	14	
DCT/AG 1121/A	1450	30	1440	1600	630	970	150	670	900	800	670	165	510	385	570	500	40	-	710	295	60	400	30	855	16	16	
DCT/AG 1121/B	1450	37				1045							565	425	626	550	40	-	710	295	60	410	30	905	19	19	



Ventilatore Tipo Fan Type	Flangia aspirazione Inlet flange					Flangia premente Outlet flange									Peso Weight kg
	D	D ₁	D ₂	d ₂	n ₂	a	b	a ₁	b ₁	a ₂	b ₂	d ₁	n fori n holes	t	
DCT/AG 501/A	229	265	299	11.5	8	125	180	167	219	195	250	11.5	6	112	75
DCT/AG 501/B															90
DCT/AG 501/C															95
DCT/AG 561/A	229	265	299	11.5	8	140	200	182	241	210	270	11.5	8	112	127
DCT/AG 561/B															132
DCT/AG 561/C															180
DCT/AG 561/D															190
DCT/AG 631/A	286	332	366	11.5	8	160	224	200	265	230	294	11.5	8	112	210
DCT/AG 631/B															220
DCT/AG 631/C															235
DCT/AG 711/A	286	332	366	11.5	8	180	250	219	292	250	320	11.5	10	112	285
DCT/AG 711/B															340
DCT/AG 711/C															360
DCT/AG 801/A	321	366	401	11.5	8	200	280	249	332	280	360	11.5	10	125	395
DCT/AG 801/B															430
DCT/AG 801/C															520
DCT/AG 801/D															290
DCT/AG 801/E															300
DCT/AG 901/A	361	405	441	11.5	8	224	315	273	366	304	395	11.5	10	125	425
DCT/AG 901/B															440
DCT/AG 1001/A	406	448	486	11.5	12	250	355	300	405	330	435	11.5	10	125	550
DCT/AG 1001/B															575
DCT/AG 1001/C															620
DCT/AG 1121/A	456	497	536	11.5	12	280	400	332	448	360	480	11.5	14	125	670
DCT/AG 1121/B															710

ELETTROVENTILATORI SERIE DCT/AG - CARATTERISTICHE IN MANDATA
ELECTRICAL FANS MODEL DCT/AG - DELIVERY CHARACTERISTICS

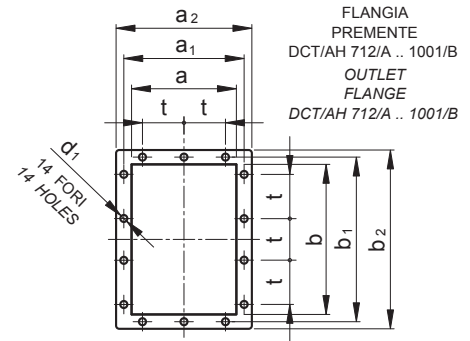
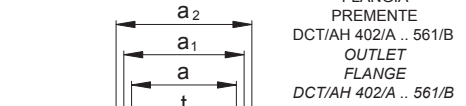
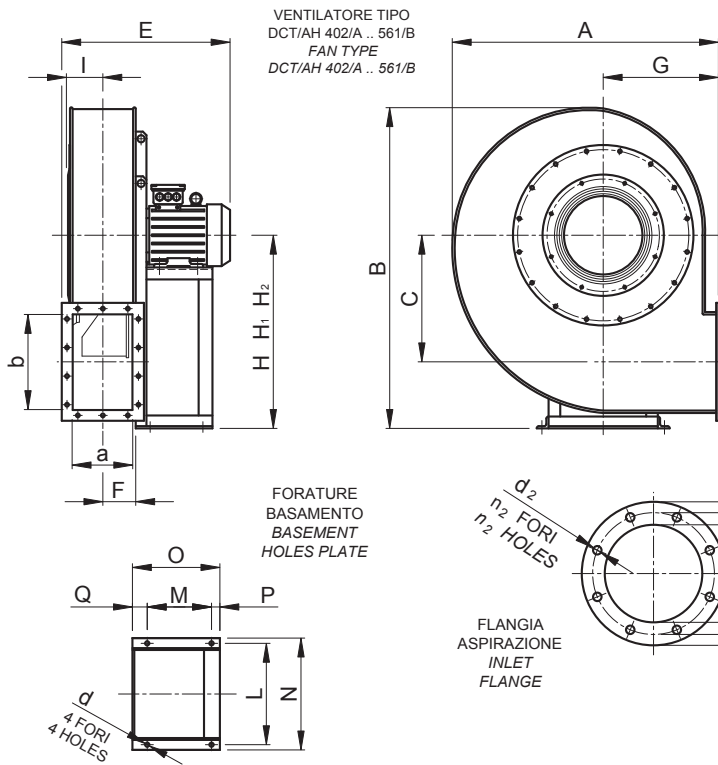
DCT/AG

Ventilatore tipo Fan type	g/1' rpm	kW inst.	dB(A)	Portata d'aria - Air capacity (m ³ /h)																					
				Pressione totale - Total pressure (mm H ₂ O)																					
				1080	1200	1320	1500	1680	1860	2100	2400	2700	3000	3360	3780	4260	4800	5400	6000	6720	7500	8400	9600	10800	12000
DCT/AG 501/A	2900	4	85	435	435	430	425	420	410	400	-	-	-	-	-	-	-	-	-	-	-	-	-	-	-
DCT/AG 501/B	2900	5,5	86	500	500	500	495	495	490	485	475	465	-	-	-	-	-	-	-	-	-	-	-	-	-
DCT/AG 501/C	2900	7,5	87	500	500	500	495	495	490	485	475	465	440	420	-	-	-	-	-	-	-	-	-	-	-
DCT/AG 561/A	2900	7,5	89	-	-	635	635	635	635	635	630	625	-	-	-	-	-	-	-	-	-	-	-	-	-
DCT/AG 561/B	2900	9	90	-	-	635	635	635	635	630	625	610	-	-	-	-	-	-	-	-	-	-	-	-	-
DCT/AG 561/C	2950	11	90	-	-	635	635	635	635	630	625	610	600	580	-	-	-	-	-	-	-	-	-	-	-
DCT/AG 561/D	2950	15	90	-	-	635	635	635	635	630	625	620	610	580	530	490	-	-	-	-	-	-	-	-	-
DCT/AG 631/A	2950	11	92	-	-	-	-	810	810	805	805	800	-	-	-	-	-	-	-	-	-	-	-	-	-
DCT/AG 631/B	2950	15	93	-	-	-	-	810	810	805	805	800	795	790	785	-	-	-	-	-	-	-	-	-	-
DCT/AG 631/C	2950	18,5	93	-	-	-	-	810	810	805	805	800	795	790	785	775	760	735	-	-	-	-	-	-	-
DCT/AG 711/A	2950	22	95	-	-	-	-	-	-	1030	1030	1025	1025	1020	1020	1015	-	-	-	-	-	-	-	-	-
DCT/AG 711/B	2950	30	96	-	-	-	-	-	-	1030	1030	1025	1025	1020	1020	1015	1015	1005	990	-	-	-	-	-	-
DCT/AG 711/C	2950	37	97	-	-	-	-	-	-	1030	1030	1025	1025	1020	1020	1015	1015	1005	990	970	945	905	-	-	-
DCT/AG 801/A	2950	37	98	-	-	-	-	-	-	-	-	1310	1310	1305	1305	1300	1295	-	-	-	-	-	-	-	-
DCT/AG 801/B	2950	45	99	-	-	-	-	-	-	-	-	1310	1310	1305	1305	1300	1295	-	-	-	-	-	-	-	-
DCT/AG 801/C	2950	55	100	-	-	-	-	-	-	-	-	1310	1310	1305	1305	1300	1295	-	-	-	-	-	-	-	-
DCT/AG 801/D	1450	5,5	81	-	-	-	-	-	315	315	315	310	305	300	-	-	-	-	-	-	-	-	-	-	-
DCT/AG 801/E	1450	7,5	82	-	-	-	-	-	315	315	315	310	305	300	-	-	-	-	-	-	-	-	-	-	-
DCT/AG 901/A	1450	11	84	-	-	-	-	-	-	-	-	390	390	385	385	380	380	375	-	-	-	-	-	-	-
DCT/AG 901/B	1450	15	85	-	-	-	-	-	-	-	-	390	390	385	385	380	380	380	375	370	360	-	-	-	-
DCT/AG 1001/A	1450	15	87	-	-	-	-	-	-	-	-	-	-	-	-	-	-	-	-	-	-	-	-	-	-
DCT/AG 1001/B	1450	18,5	88	-	-	-	-	-	-	-	-	-	-	-	-	-	-	-	-	-	-	-	-	-	-
DCT/AG 1001/C	1450	22	89	-	-	-	-	-	-	-	-	-	-	-	-	-	-	-	-	-	-	-	-	-	-
DCT/AG 1121/A	1450	30	91	-	-	-	-	-	-	-	-	-	-	-	-	-	-	-	-	-	-	-	-	-	-
DCT/AG 1121/B	1450	37	92	-	-	-	-	-	-	-	-	-	-	-	-	-	-	-	-	-	-	-	-	-	-

ELETTROVENTILATORI SERIE DCT/AG - CARATTERISTICHE IN ASPIRAZIONE
ELECTRICAL FANS MODEL DCT/AG - SUCKING CHARACTERISTICS

Ventilatore tipo Fan type	g/1' rpm	kW inst.	dB(A)	Portata d'aria - Air capacity (m ³ /h)																						
				Pressione totale - Total pressure (mm H ₂ O)																						
				1080	1200	1320	1500	1680	1860	2100	2400	2700	3000	3360	3780	4260	4800	5400	6000	6720	7500	8400	9600	10800	12000	13500
DCT/AG 502/A	2900	4	87	415	415	410	405	400	390	380	-	-	-	-	-	-	-	-	-	-	-	-	-	-	-	
DCT/AG 501/B	2900	5.5	88	475	475	475	470	470	465	460	455	445	-	-	-	-	-	-	-	-	-	-	-	-	-	
DCT/AG 501/C	2900	7.5	89	475	475	475	470	470	465	460	455	445	440	425	405	-	-	-	-	-	-	-	-	-	-	
DCT/AG 561/A	2900	7.5	91	-	590	590	590	590	590	590	585	580	-	-	-	-	-	-	-	-	-	-	-	-	-	
DCT/AG 561/B	2900	9.2	92	-	590	590	590	590	590	590	585	580	575	565	-	-	-	-	-	-	-	-	-	-	-	
DCT/AG 561/C	2950	11	92	-	590	590	590	590	590	590	585	580	575	565	555	540	-	-	-	-	-	-	-	-	-	
DCT/AG 561/D	2950	15	92	-	590	590	590	590	590	590	585	580	575	565	555	540	495	455	-	-	-	-	-	-	-	
DCT/AG 631/A	2950	11	94	-	-	740	740	740	740	735	735	730	730	-	-	-	-	-	-	-	-	-	-	-	-	
DCT/AG 631/B	2950	15	95	-	-	740	740	740	740	735	735	730	730	725	720	715	-	-	-	-	-	-	-	-	-	
DCT/AG 631/C	2950	18.5	95	-	-	740	740	740	740	735	735	730	730	725	720	715	710	680	-	-	-	-	-	-	-	
DCT/AG 711/A	2950	22	97	-	-	-	-	-	-	920	920	920	915	915	910	910	905	-	-	-	-	-	-	-	-	
DCT/AG 711/B	2950	30	96	-	-	-	-	-	-	920	920	920	915	915	910	910	905	900	890	-	-	-	-	-	-	
DCT/AG 711/C	2950	37	99	-	-	-	-	-	-	920	920	920	915	915	910	910	905	900	890	880	860	830	-	-	-	
DCT/AG 801/A	2950	37	100	-	-	-	-	-	-	-	-	1140	1140	1140	1135	1135	1130	1130	-	-	-	-	-	-	-	
DCT/AG 801/B	2950	45	101	-	-	-	-	-	-	-	-	1140	1140	1140	1135	1135	1130	1130	1130	1125	1115	-	-	-	-	
DCT/AG 801/C	2950	55	102	-	-	-	-	-	-	-	-	1140	1140	1140	1135	1135	1130	1130	1130	1125	1115	1095	1080	-	-	
DCT/AG 801/D	1450	5.5	84	-	-	-	-	-	295	295	295	295	295	290	290	-	-	-	-	-	-	-	-	-	-	
DCT/AG 801/E	1450	7.5	85	-	-	-	-	-	295	295	295	295	295	290	290	285	285	280	270	-	-	-	-	-	-	
DCT/AG 901/A	1450	11	86	-	-	-	-	-	-	-	-	375	375	375	375	370	365	365	360	-	-	-	-	-	-	
DCT/AG 901/B	1450	15	87	-	-	-	-	-	-	-	-	375	375	375	375	370	365	365	360	355	350	-	-	-	-	
DCT/AG 1001/A	1450	15	89	-	-	-	-	-	-	-	-	-	-	-	470	470	465	460	455	-	-	-	-	-	-	
DCT/AG 1001/B	1450	18.5	90	-	-	-	-	-	-	-	-	-	-	-	470	470	465	460	455	455	450	445	-	-	-	
DCT/AG 1001/C	1450	22	91	-	-	-	-	-	-	-	-	-	-	-	470	470	465	460	455	455	450	445	440	430	-	
DCT/AG 1121/A	1450	30	93	-	-	-	-	-	-	-	-	-	-	-	-	-	585	585	585	585	585	580	575	570	-	
DCT/AG 1121/B	1450	37	94	-	-	-	-	-	-	-	-	-	-	-	-	-	585	585	585	585	585	580	575	570	565	560

MODELLO DCT/AH - DIMENSIONI DI INGOMBRO
MODEL DCT/AH - OVERALL DIMENSIONS



NOTA BENE :
 DCT/AH 402/A .. 561/B
 IL VENTILATORE E' ORIENTABILE
 DCT/AH 712/A .. 1121/C
 IL VENTILATORE NON E' ORIENTABILE

NOTE :
 DCT/AH 402/A .. 561/B
 THE FAN IS REVOLVABLE
 DCT/AH 712/A .. 1121/C
 THE FAN IS NOT REVOLVABLE

Ventilatore Tipo Fan Type	Motore Motor		Ventilatore Fan									Basamento Basement														
	g/1' rpm	kW inst.	A	B	C	E	F	G	H	H ₁	H ₂	I	L	M	N	O	P	Q	L ₁	R	S	T	U	V	d	
DCT/AH 402/A	2910	4	695	830	325	560	96	300	500	500	300	104	300	200	332	260	25	35	-	-	-	-	-	-	-	12
DCT/AH 401/A	2890	5.5				625							360	250	392	320	25	45								12
DCT/AH 452/A	2890	7.5				650							360	250	392	320	25	45								12
DCT/AH 451/A	2890	7.5	780	930	365	600	107	335	560	560	335	116	360	250	392	320	25	45	-	-	-	-	-	-	-	12
DCT/AH 451/B	2900	9.2				600							360	250	392	320	25	45								12
DCT/AH 502/A	2920	11				810							400	305	440	340	30	45								14
DCT/AH 501/A	2920	11	850	1040	407	810	119	355	630	630	355	132	400	305	440	340	30	45	-	-	-	-	-	-	-	14
DCT/AH 501/B	2920	15				810							400	305	440	340	30	45								14
DCT/AH 562/A	2930	22				835							450	325	500	470	35	65								14
DCT/AH 562/A	2930	22	955	1165	458	835	133	400	710	560	400	136	450	325	500	470	35	65	-	-	-	-	-	-	-	14
DCT/AH 561/B	2950	30				910							510	385	570	500	40	75								16
DCT/AH 712/A	1450	7.5	1205	1490	580	785	160	500	900	710	500	180	800	250	850	320	30	-	800	320	60	390	30	700	17	
DCT/AH 711/A	1450	11				920							800	340	850	425	30	-	800	320	60	405	30	805	17	
DCT/AH 802/A	1450	11				960							870	340	930	425	30	-	870	360	60	445	30	845	17	
DCT/AH 802/B	1460	15				960	181	560	1000	800	560	205	870	340	930	425	30	-	870	360	60	445	30	845	17	
DCT/AH 801/A	1460	15	1340	1650	650	960							870	340	930	425	30	-	870	360	60	445	30	845	17	
DCT/AH 801/B	1460	18.5				960							870	370	930	470	30	-	870	360	60	460	30	890	17	
DCT/AH 902/A	1460	22				1080							970	375	1030	470	25	-	970	406	60	506	30	936	19	
DCT/AH 902/B	1470	30	1485	1780	705	1080	203	630	1060	900	630	228	970	385	1030	500	30	-	970	406	60	521	30	366	19	
DCT/AH 901/A	1470	30				1080							970	385	1030	500	30	-	970	406	60	521	30	366	19	
DCT/AH 901/B	1470	37				1160							970	425	1030	550	40	-	970	406	60	521	30	1016	19	
DCT/AH 1002/A	1470	37				1230							1060	425	1130	550	40	-	1060	458	70	578	35	1078	21	
DCT/AH 1002/B	1470	45	1670	1980	795	1230	228	710	1180	1000	710	260	1060	425	1130	550	40	-	1060	458	70	578	35	1078	21	
DCT/AH 1001/A	1470	45				1230							1060	425	1130	550	40	-	1060	458	70	578	35	1078	21	
DCT/AH 1001/B	1470	55				1260							1060	460	1130	600	45	-	1060	458	70	588	35	1128	21	
DCT/AH 1122/A	1470	55				1280							1200	460	1270	600	40	-	1200	508	80	643	45	1188	24	
DCT/AH 1122/B	1480	75				1410							1200	550	1270	700	40	-	1200	508	80	648	50	1288	24	
DCT/AH 1121/A	1480	75	1880	2220	895	1410	254	800	1320	1120	800	284	1200	550	1270	700	40	-	1200	508	80	648	50	1288	24	
DCT/AH 1121/B	1480	90				1410							1200	550	1270	700	40	-	1200	508	80	648	50	1288	24	
DCT/AH 1121/C	1480	110				1410							1200	610	1270	770	40	-	1200	508	80	668	40	1358	24	

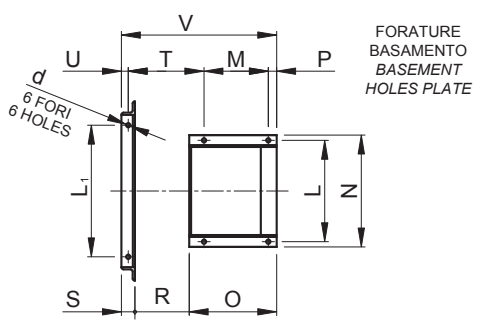
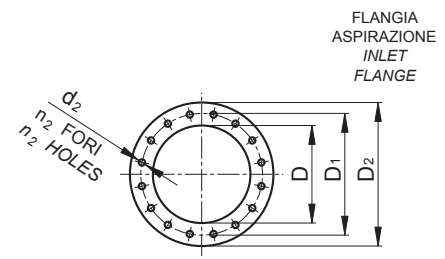
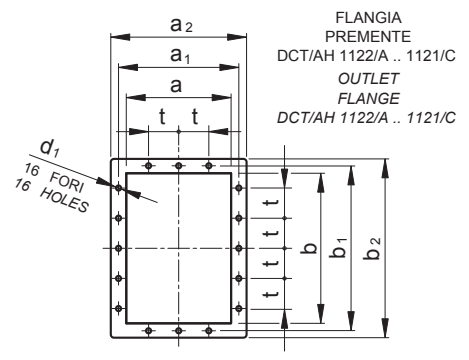
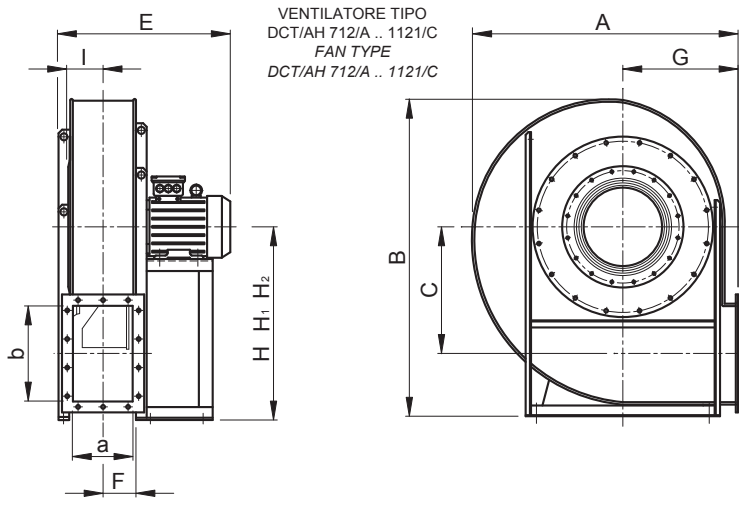


TABELLA ORIENTAMENTI - TABLE OF DISCHARGE POSITIONS

	0	45	90	135	180	225	270	315
LG +								
RD +								
	H ₁			H ₂			H	

Ventilatore Tipo Fan Type	Flangia aspirazione Inlet flange					Flangia premente Outlet flange									Peso Weight kg
	D	D ₁	D ₂	d ₂	n ₂	a	b	a ₁	b ₁	a ₂	b ₂	d ₁	n fori n holes	t	
DCT/AH 402/A	255	292	325	11.5	8	180	250	219	292	250	320	11.5	10	112	84
DCT/AH 401/A															95
DCT/AH 452/A	286	332	366	11.5	8	200	280	249	332	280	360	11.5	10	125	120
DCT/AH 451/A															125
DCT/AH 451/B															140
DCT/AH 502/A	321	366	401	11.5	8	224	315	273	366	304	395	11.5	10	125	200
DCT/AH 501/A															205
DCT/AH 501/B															210
DCT/AH 562/A	361	405	441	11.5	8	250	355	300	405	330	435	11.5	10	125	290
DCT/AH 562/B															300
DCT/AH 561/B															350
DCT/AH 712/A	456	497	536	11.5	12	315	450	366	497	395	530	11.5	14	125	250
DCT/AH 711/A															270
DCT/AH 802/A	506	551	586	11.5	12	355	500	405	551	435	580	11.5	14	125	380
DCT/AH 802/B															390
DCT/AH 801/A															400
DCT/AH 801/B															435
DCT/AH 902/A	566	629	666	11.5	16	400	560	464	629	500	660	14	14	160	500
DCT/AH 902/B															525
DCT/AH 901/A															550
DCT/AH 901/B															590
DCT/AH 1002/A	636	698	736	11.5	16	450	630	513	698	550	730	14	14	160	670
DCT/AH 1002/B															695
DCT/AH 1001/A															725
DCT/AH 1001/B															780
DCT/AH 1122/A	716	775	816	11.5	16	500	710	567	775	600	810	14	16	160	1000
DCT/AH 1122/B															1100
DCT/AH 1121/A															1130
DCT/AH 1121/B															1150
DCT/AH 1121/C															1250

ELETTROVENTILATORI SERIE DCT/AH - CARATTERISTICHE IN MANDATA
ELECTRICAL FANS MODEL DCT/AH - DELIVERY CHARACTERISTICS

DCT/AH

Portata d'aria - Air capacity (m³/h)

Pressione totale - Total pressure (mm H₂O)

Tolleranza sulla portata: ±5% - Capacity tolerance ±5%
Tolleranza sulla rumorosità: +3 dB(A) - Noise level tolerance +3 dB(A)

Ventilatore tipo Fan type	g/1' rpm	kW inst.	dB(A)	1320	1500	1680	1860	2100	2400	2700	3000	3360	3780	4260	4800	5400	6000	6720	7500	8400	9600	10800	12000	13500	15000	16800	18900	21300	24000	27000	30000	33600	37800	42600	48000	54000				
DCT/AH 402/A	2910	4	81	240	240	240	238	235	230	228	222	216	205	-	-	-	-	-	-	-	-	-	-	-	-	-	-	-	-	-	-	-	-	-	-	-	-			
DCT/AH 401/A	2890	5.5	83	280	280	278	275	272	272	270	265	255	250	240	-	-	-	-	-	-	-	-	-	-	-	-	-	-	-	-	-	-	-	-	-	-	-	-		
DCT/AH 452/A	2890	7.5	84	-	-	-	310	306	300	295	292	286	280	275	268	258	-	-	-	-	-	-	-	-	-	-	-	-	-	-	-	-	-	-	-	-	-	-		
DCT/AH 451/A	2890	7.5	85	-	-	-	350	350	350	350	345	340	335	330	-	-	-	-	-	-	-	-	-	-	-	-	-	-	-	-	-	-	-	-	-	-	-	-	-	
DCT/AH 451/B	2900	9.2	85	-	-	-	350	350	350	350	345	340	335	330	322	315	300	-	-	-	-	-	-	-	-	-	-	-	-	-	-	-	-	-	-	-	-	-	-	
DCT/AH 502/A	2920	11	86	-	-	-	-	-	-	390	388	385	380	372	365	355	345	335	325	-	-	-	-	-	-	-	-	-	-	-	-	-	-	-	-	-	-	-	-	
DCT/AH 501/A	2920	11	87	-	-	-	-	-	-	440	440	438	435	430	425	420	412	-	-	-	-	-	-	-	-	-	-	-	-	-	-	-	-	-	-	-	-	-	-	
DCT/AH 501/B	2920	15	87	-	-	-	-	-	-	440	440	438	435	430	425	420	412	400	385	370	-	-	-	-	-	-	-	-	-	-	-	-	-	-	-	-	-	-	-	
DCT/AH 562/A	2930	22	88	-	-	-	-	-	-	-	-	-	490	490	488	485	478	472	465	450	435	420	-	-	-	-	-	-	-	-	-	-	-	-	-	-	-	-	-	
DCT/AH 562/A	2930	22	89	-	-	-	-	-	-	-	-	-	550	550	550	548	545	540	532	520	-	-	-	-	-	-	-	-	-	-	-	-	-	-	-	-	-	-	-	
DCT/AH 561/B	2950	30	90	-	-	-	-	-	-	-	-	-	550	550	550	548	545	540	532	520	505	482	470	-	-	-	-	-	-	-	-	-	-	-	-	-	-	-	-	
DCT/AH 712/A	1450	7.5	79	-	-	-	-	-	-	-	-	-	196	195	192	190	186	182	178	172	166	160	-	-	-	-	-	-	-	-	-	-	-	-	-	-	-	-	-	
DCT/AH 711/A	1450	11	80	-	-	-	-	-	-	-	-	-	220	220	220	220	218	215	210	205	200	190	180	-	-	-	-	-	-	-	-	-	-	-	-	-	-	-	-	
DCT/AH 802/A	1450	11	81	-	-	-	-	-	-	-	-	-	-	-	-	250	250	248	245	240	235	-	-	-	-	-	-	-	-	-	-	-	-	-	-	-	-	-	-	
DCT/AH 802/B	1460	15	82	-	-	-	-	-	-	-	-	-	-	-	-	250	250	248	245	240	235	230	225	218	208	-	-	-	-	-	-	-	-	-	-	-	-	-	-	
DCT/AH 801/A	1460	15	82	-	-	-	-	-	-	-	-	-	-	-	-	280	280	280	278	275	270	265	-	-	-	-	-	-	-	-	-	-	-	-	-	-	-	-	-	
DCT/AH 801/B	1460	18.5	83	-	-	-	-	-	-	-	-	-	-	-	-	280	280	280	278	275	270	265	258	250	240	-	-	-	-	-	-	-	-	-	-	-	-	-	-	
DCT/AH 902/A	1460	22	84	-	-	-	-	-	-	-	-	-	-	-	-	-	-	350	350	345	340	335	330	322	-	-	-	-	-	-	-	-	-	-	-	-	-	-	-	
DCT/AH 902/B	1470	30	84	-	-	-	-	-	-	-	-	-	-	-	-	-	-	350	350	345	340	335	330	322	310	295	278	-	-	-	-	-	-	-	-	-	-	-	-	
DCT/AH 901/A	1470	30	85	-	-	-	-	-	-	-	-	-	-	-	-	-	-	395	395	392	385	380	376	370	360	345	345	345	345	345	345	345	345	345	345	345	345	345	345	
DCT/AH 901/B	1470	37	85	-	-	-	-	-	-	-	-	-	-	-	-	-	-	395	395	392	385	380	376	370	360	345	345	345	345	345	345	345	345	345	345	345	345	345	345	
DCT/AH 1002/A	1470	37	86	-	-	-	-	-	-	-	-	-	-	-	-	-	-	-	-	-	430	428	425	420	415	405	385	-	-	-	-	-	-	-	-	-	-	-	-	
DCT/AH 1002/B	1470	45	87	-	-	-	-	-	-	-	-	-	-	-	-	-	-	-	-	-	430	428	425	420	415	405	385	350	350	350	350	350	350	350	350	350	350	350		
DCT/AH 1001/A	1470	45	87	-	-	-	-	-	-	-	-	-	-	-	-	-	-	-	-	-	480	480	480	475	465	455	445	435	-	-	-	-	-	-	-	-	-	-	-	
DCT/AH 1001/B	1470	55	88	-	-	-	-	-	-	-	-	-	-	-	-	-	-	-	-	-	480	480	480	475	465	455	445	435	420	400	375	350	-	-	-	-	-	-	-	
DCT/AH 1122/A	1470	55	89	-	-	-	-	-	-	-	-	-	-	-	-	-	-	-	-	-	-	-	-	525	525	520	510	-	-	-	-	-	-	-	-	-	-	-	-	-
DCT/AH 1122/B	1480	75	89	-	-	-	-	-	-	-	-	-	-	-	-	-	-	-	-	-	-	-	-	525	525	520	510	495	480	465	445	420	-	-	-	-	-	-	-	-
DCT/AH 1121/A	1480	75	90	-	-	-	-	-	-	-	-	-	-	-	-	-	-	-	-	-	-	-	-	600	600	595	590	580	570	555	555	555	555	555	555	555	555	555	555	555
DCT/AH 1121/B	1480	90	91	-	-	-	-	-	-	-	-	-	-	-	-	-	-	-	-	-	-	-	-	600	600	595	590	580	570	555	555	555	555	555	555	555	555	555	555	555
DCT/AH 1121/C	1480	110	93	-	-	-	-	-	-	-	-	-	-	-	-	-	-	-	-	-	-	-	-	600	600	595	590	580	570	555	555	555	555	555	555	555	555	555	555	555

