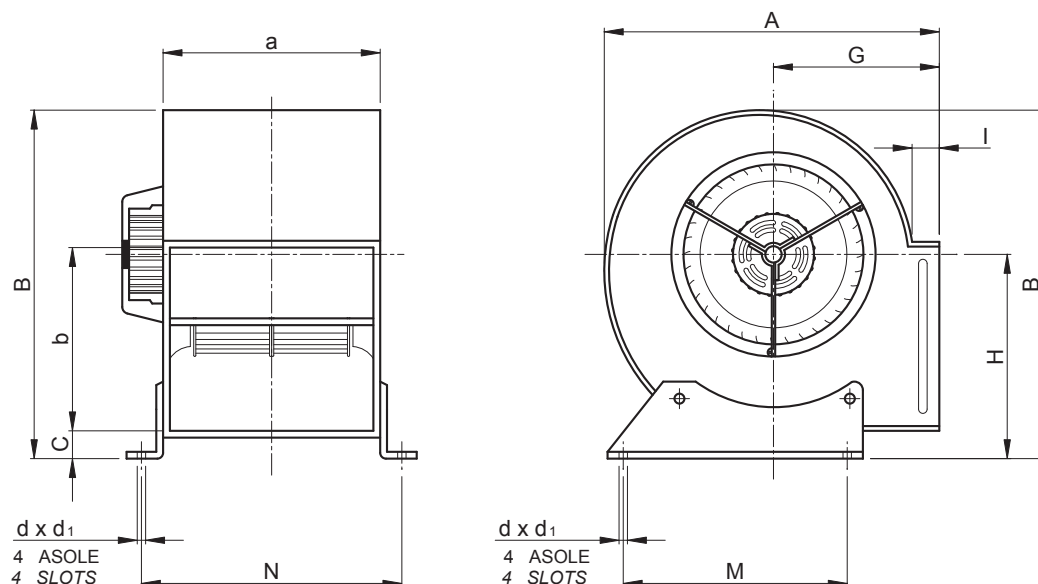


MODELLO DMD - DIMENSIONI DI INGOMBRO
MODEL DMD - OVERALL DIMENSIONS



Ventilatore Tipo Fan Type	Motore Motor		Ventilatore Fan						Basamento Basement				Flangia premente Outlet flange	
	g/1' rpm	kW inst.	A	B	C	G	H	I	N	M	d	d ₁	a	b
DMD 5/5	1540	0.12	172	180	-	85	93	8	-	-	-	-	71	215
DMD 6/6	1700	0.25	205	218	-	95	105	8	-	-	-	-	100	232
DMD 7/7	1300	0.09	320	344	16	157	178	38	260	225	16	12	200	232
DMD 7/7	900	0.09	320	344	16	157	178	38	260	225	16	12	200	232
DMD 9/7	1380	0.37	378	405	16	184	205	38	260	300	16	12	261	232
DMD 9/7	880	0.17	378	405	16	184	205	38	260	300	16	12	261	232
DMD 9/9	1380	0.37	378	405	16	184	205	38	326	300	16	12	261	298
DMD 9/9	880	0.17	378	405	16	184	205	38	326	300	16	12	261	298
DMD 10/8	1380	0.55	428	480	38	207	232	38	293	340	16	12	289	265
DMD 10/8	880	0.25	428	480	38	207	232	38	293	340	16	12	289	265
DMD 10/10	1380	0.55	428	480	38	207	232	38	359	340	16	12	289	331
DMD 10/10	880	0.25	428	480	38	207	232	38	359	340	16	12	289	331
DMD 12/9	925	1.1	497	560	38	236	267	38	337	408	16	12	342	309
DMD 12/12	925	1.1	497	560	38	236	267	38	423	408	16	12	342	395

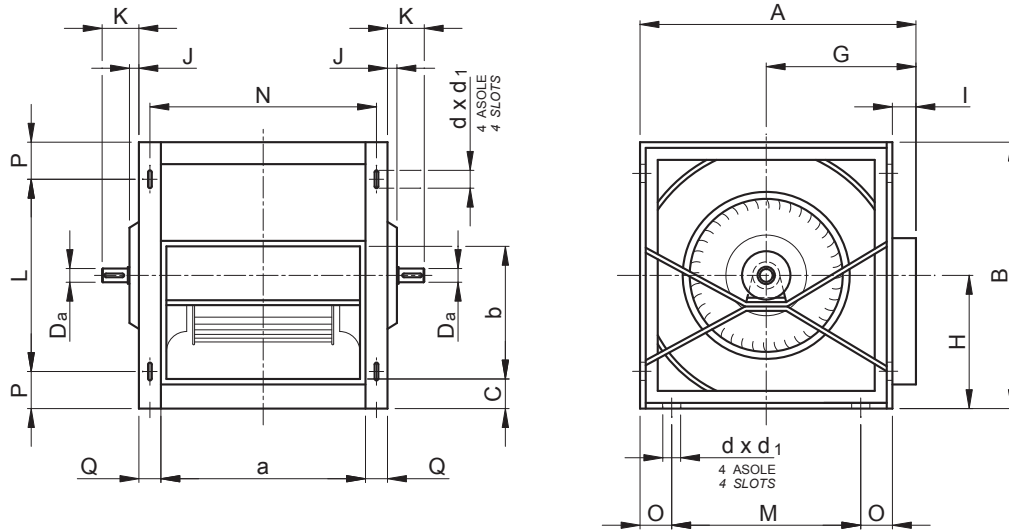
Nei modelli 7/7, 9/7, 10/8, 10/10 è disponibile la versione a 3 velocità, sia a 4 poli che a 6 poli.
 E' d'uopo precisare che le prestazioni del ventilatore diminuiscono di circa il 6% rispetto al modello corrispettivo a 1 velocità.

*In the models 7/7, 9/7, 10/8, 10/10 are available the version to 3 speeds, both to 4 poles and to 6 poles.
 In this case the performances of fan decrease about 6% compared to correspondent model with 1 speed.*

PRESTAZIONI ELETTROVENTILATORI - SERIE DMD
ELECTRICAL FANS PERFORMANCES - MODEL DMD

Ventilatore tipo Fan type	g/1' rpm	kW inst.	Volt	dB(A)	Pressione totale - Total pressure (mm H ₂ O)												
					0	5	10	15	20	25	30	35	40	45	50	55	
					Portata d'aria - Air capacity (m ³ /h)												
DMD 5/5	1540	0.12	220 mono	53	-	-	560	520	470	410	310	170	-	-	-	-	-
DMD 6/6	1700	0.25	220 mono	61	-	-	770	720	670	570	320	110	-	-	-	-	-
DMD 7/7	1300	0.09	220 mono	67	-	1100	960	820	610	230	-	-	-	-	-	-	-
DMD 7/7	900	0.09	220 mono	58	-	1100	450	-	-	-	-	-	-	-	-	-	-
DMD 9/7	1380	0.37	220 mono	74	-	-	-	2000	1900	1620	1150	-	-	-	-	-	-
DMD 9/7	880	0.17	220 mono	69	-	1900	1700	700	-	-	-	-	-	-	-	-	-
DMD 9/9	1380	0.37	220 mono	73	-	-	-	2500	2400	2100	1200	-	-	-	-	-	-
DMD 9/9	880	0.18	220 mono	74	-	2300	2100	1600	-	-	-	-	-	-	-	-	-
DMD 10/8	1380	0.55	220 mono	74	-	-	-	-	-	2800	2600	2500	2200	1400	-	-	-
DMD 10/8	880	0.25	220 mono	69	-	-	2600	2300	2000	-	-	-	-	-	-	-	-
DMD 10/10	1380	0.55	220 mono	74	-	-	-	-	-	3200	3100	3000	2800	1600	-	-	-
DMD 10/10	880	0.25	220 mono	69	-	-	2800	2450	2100	-	-	-	-	-	-	-	-
DMD 12/9	925	0.55	220 mono	73	-	-	-	3800	3700	3000	-	-	-	-	-	-	-
DMD 12/9	925	1.1	220/380	77	-	-	-	5700	5000	4400	4100	-	-	-	-	-	-
DMD 12/12	925	0.55	220 mono	74	-	-	-	4200	4100	3300	-	-	-	-	-	-	-
DMD 12/12	925	1.1	220/380	78	-	-	-	6200	5700	5000	4500	-	-	-	-	-	-

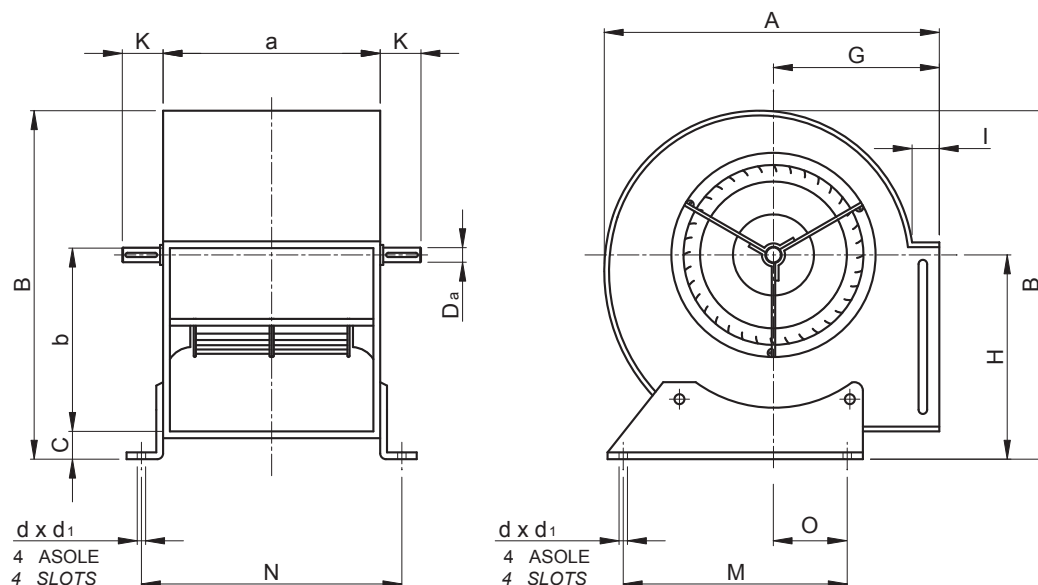
MODELLO DMD/R-T - DIMENSIONI DI INGOMBRO
MODEL DMD/R-T - OVERALL DIMENSIONS



Ventilatore Tipo Fan Type		Ventilatore Fan						Albero Shaft				Basamento Basement						Flangia premere Outlet flange			
		A	B	C	G	H	I	Da	K	J	Linguetta Shaft key	N	M	L	O	P	Q	d	d ₁	a	b
DMD/R-T 7/7	Classe 1	327	340	6	157	192	31	20	51	-	-	254	196	240	50	50	20	12	9	232	200
	Classe 2	-	-	-	-	-	-	-	-	-	-	-	-	-	-	-	-	-	-	-	-
DMD/R-T 9/7	Classe 1	382	400	6	184	222	32	20	51	-	-	254	250	300	50	50	20	12	9	232	261
	Classe 2	25	85	22	8 x 7	-	-	-	-	-	-	-	-	-	-	-	-	-	-	-	-
DMD/R-T 9/9	Classe 1	382	400	6	184	222	32	20	51	-	-	320	250	300	50	50	20	12	9	298	261
	Classe 2	25	85	22	8 x 7	-	-	-	-	-	-	-	-	-	-	-	-	-	-	-	-
DMD/R-T 10/8	Classe 1	434	454	6	207	252	36	20	51	-	-	287	298	354	50	50	20	12	9	265	289
	Classe 2	25	85	22	8 x 7	-	-	-	-	-	-	-	-	-	-	-	-	-	-	-	-
DMD/R-T 10/10	Classe 1	434	454	6	207	252	36	20	51	-	-	353	298	354	50	50	20	12	9	331	289
	Classe 2	25	85	22	8 x 7	-	-	-	-	-	-	-	-	-	-	-	-	-	-	-	-
DMD/R-T 12/9	Classe 1	504	536	6	236	297	38	25	60	-	8 x 7	341	366	435	50	50	30	16	12	309	342
	Classe 2	30	78	12	8 x 7	-	-	-	-	-	-	-	-	-	-	-	-	-	-	-	-
DMD/R-T 12/12	Classe 1	504	535	6	236	297	38	25	60	-	8 x 7	427	366	435	50	50	30	16	12	395	342
	Classe 2	30	77	12	8 x 7	-	-	-	-	-	-	-	-	-	-	-	-	-	-	-	-
DMD/R-T 15/11	Classe 1	583	628	6	271	350	38	25	71	-	8 x 7	405	445	528	50	50	30	16	12	373	404
	Classe 2	30	88	12	8 x 7	-	-	-	-	-	-	-	-	-	-	-	-	-	-	-	-
DMD/R-T 15/15	Classe 1	583	628	6	271	350	38	25	70	-	8 x 7	506	445	528	50	50	30	16	12	474	404
	Classe 2	30	78	12	8 x 7	-	-	-	-	-	-	-	-	-	-	-	-	-	-	-	-
DMD/R-T 18/13	Classe 1	697	754	6	320	421	42	25	77	-	8 x 7	467	515	614	70	70	40	18	14	425	480
	Classe 2	30	92	2	8 x 7	-	-	-	-	-	-	-	-	-	-	-	-	-	-	-	-
DMD/R-T 18/18	Classe 1	697	754	6	320	421	42	25	74	-	8 x 7	599	515	614	70	70	40	18	14	557	480
	Classe 2	30	89	2	8 x 7	-	-	-	-	-	-	-	-	-	-	-	-	-	-	-	-
DMD/R-T 20/15	Classe 1	834	972	50	370	571	50	35	84	-	10 x 8	566	644	832	70	70	50	22	18	514	629
	Classe 2	40	99	2	12 x 8	-	-	-	-	-	-	-	-	-	-	-	-	-	-	-	-
DMD/R-T 20/20	Classe 1	834	972	50	370	571	50	35	84	-	10 x 8	684	644	832	70	70	50	22	18	632	629
	Classe 2	40	99	2	12 x 8	-	-	-	-	-	-	-	-	-	-	-	-	-	-	-	-
DMD/R-T 22/15	Classe 1	910	1060	50	399	621	50	35	84	-	10 x 8	566	720	920	70	70	50	22	18	514	692
	Classe 2	40	99	2	12 x 8	-	-	-	-	-	-	-	-	-	-	-	-	-	-	-	-
DMD/R-T 22/22	Classe 1	910	1060	50	399	621	50	35	84	-	10 x 8	744	720	920	70	70	50	22	18	692	692
	Classe 2	40	99	2	12 x 8	-	-	-	-	-	-	-	-	-	-	-	-	-	-	-	-
DMD/R-T 25/20	Classe 1	1000	1187	50	427	700	50	35	97	-	10 x 8	719	810	1047	70	70	50	22	18	667	794
	Classe 2	40	111	12	12 x 8	-	-	-	-	-	-	-	-	-	-	-	-	-	-	-	-
DMD/R-T 25/25	Classe 1	1000	1187	50	427	700	50	35	88	-	10 x 8	846	810	1047	70	70	50	22	18	794	794
	Classe 2	40	103	12	12 x 8	-	-	-	-	-	-	-	-	-	-	-	-	-	-	-	-
DMD/R-T 28/20	Classe 1	1108	1312	50	475	770	50	35	97	-	10 x 8	719	918	1172	70	70	50	22	18	667	870
	Classe 2	40	111	12	12 x 8	-	-	-	-	-	-	-	-	-	-	-	-	-	-	-	-
DMD/R-T 28/28	Classe 1	1108	1312	50	475	770	50	35	134	-	10 x 8	922	918	1172	70	70	50	22	18	870	870
	Classe 2	40	149	12	12 x 8	-	-	-	-	-	-	-	-	-	-	-	-	-	-	-	-
DMD/R-T 30/22	Classe 1	1205	1415	50	517	826	50	35	122	-	10 x 8	778	1015	1275	70	70	50	22	18	726	934
	Classe 2	40	137	12	12 x 8	-	-	-	-	-	-	-	-	-	-	-	-	-	-	-	-
DMD/R-T 30/28	Classe 1	1205	1415	50	517	826	50	35	134	-	10 x 8	922	1015	1275	70	70	50	22	18	870	934
	Classe 2	40	149	12	12 x 8	-	-	-	-	-	-	-	-	-	-	-	-	-	-	-	-

Linguetta secondo Normativa UNI 6604-69 (dove applicabile) - Shaft key as per UNI 6604-69 specification (where applicable).

MODELLO DMD-T - DIMENSIONI DI INGOMBRO
MODEL DMD-T - OVERALL DIMENSIONS



Ventilatore Tipo Fan Type	Ventilatore Fan						Albero Shaft			Basamento Basement				Flangia premente Outlet flange		
	A	B	C	G	H	I	Da	K	Linguetta Key	N	M	O	d	d ₁	a	b
DMD-T 7/7	320	344	16	157	202	38	20	45	-	260	225	100	16	12	200	232
DMD-T 9/7	378	405	16	184	232	38	20	45	-	260	300	127	16	12	261	232
DMD-T 9/9	378	405	16	184	232	38	20	45	-	326	300	127	16	12	261	298
DMD-T 10/8	428	480	38	207	284	38	20	45	-	293	340	136	16	12	289	265
DMD-T 10/10	428	480	38	207	284	38	20	44	-	359	340	136	16	12	289	331
DMD-T 12/9	497	560	38	236	330	38	25	55	8 x 7	337	408	170	16	12	342	309
DMD 12/12	497	560	38	236	330	38	25	57	8 x 7	423	408	170	16	12	342	395
DMD-T 15/11	580	654	38	271	382	38	25	68	8 x 7	401	495	196	16	12	373	404
DMD-T 15/15	580	654	38	271	382	38	25	67	8 x 7	502	495	196	16	12	474	404
DMD-T 18/13	692	780	38	320	453	38	25	71	8 x 7	458	610	247	16	12	425	480
DMD/T 18/18	692	780	37	320	453	38	25	68	8 x 7	585	610	247	16	12	557	480

Linguetta secondo Normativa UNI 6604-69 (dove applicabile) - Shaft key as per UNI 6604-69 specification (where applicable).

DMD-T 7/7

PRESTAZIONI
PERFORMANCES

GIRI MASSIMI AMMISSIBILI
VENTILATORE CLASSE 1 2400 giri/min
VENTILATORE CLASSE 2 - giri/min

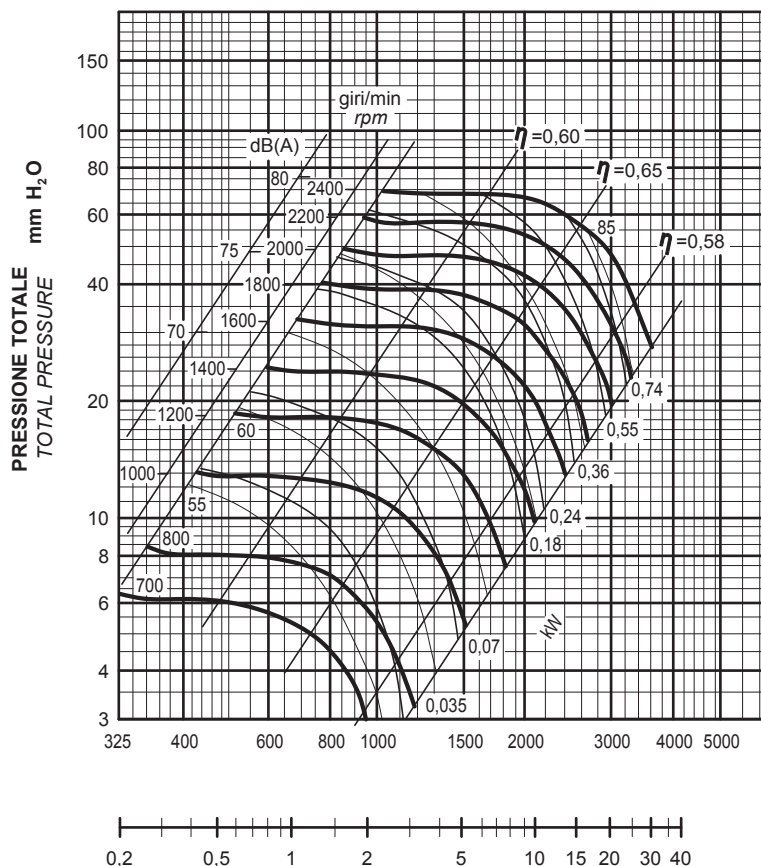
MAXIMUM ADMISSIBLE ROUNDS
CLASSE 1 FAN TYPE 2400 rpm
CLASSE 2 FAN TYPE - rpm

TOLLERANZA SULLA RUMOROSITA' +3 dB(A)
TOLLERANZA SULLA POTENZA ASSORBITA ±3%

NOISE LEVEL TOLERANCE +3 dB(A)
ABSORBED POWER TOLERANCE ±3%

PORTATA m^3/h
CAPACITY

PRESSIONE DINAMICA $mm H_2O$
DYNAMIC PRESSURE



DMD-T 9/7

PRESTAZIONI
PERFORMANCES

GIRI MASSIMI AMMISSIBILI
VENTILATORE CLASSE 1 2000 giri/min
VENTILATORE CLASSE 2 2600 giri/min

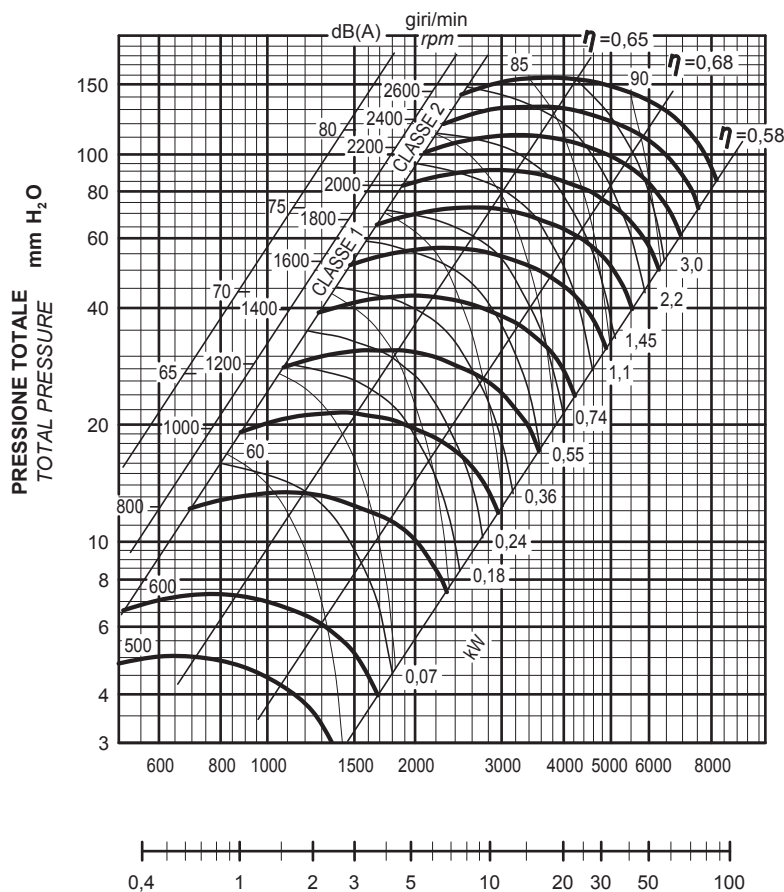
MAXIMUM ADMISSIBLE ROUNDS
CLASSE 1 FAN TYPE 2000 rpm
CLASSE 2 FAN TYPE 2600 rpm

TOLLERANZA SULLA RUMOROSITA' +3 dB(A)
TOLLERANZA SULLA POTENZA ASSORBITA ±3%

NOISE LEVEL TOLERANCE +3 dB(A)
ABSORBED POWER TOLERANCE ±3%

PORTATA m^3/h
CAPACITY

PRESSIONE DINAMICA $mm H_2O$
DYNAMIC PRESSURE



DMD-T 9/9

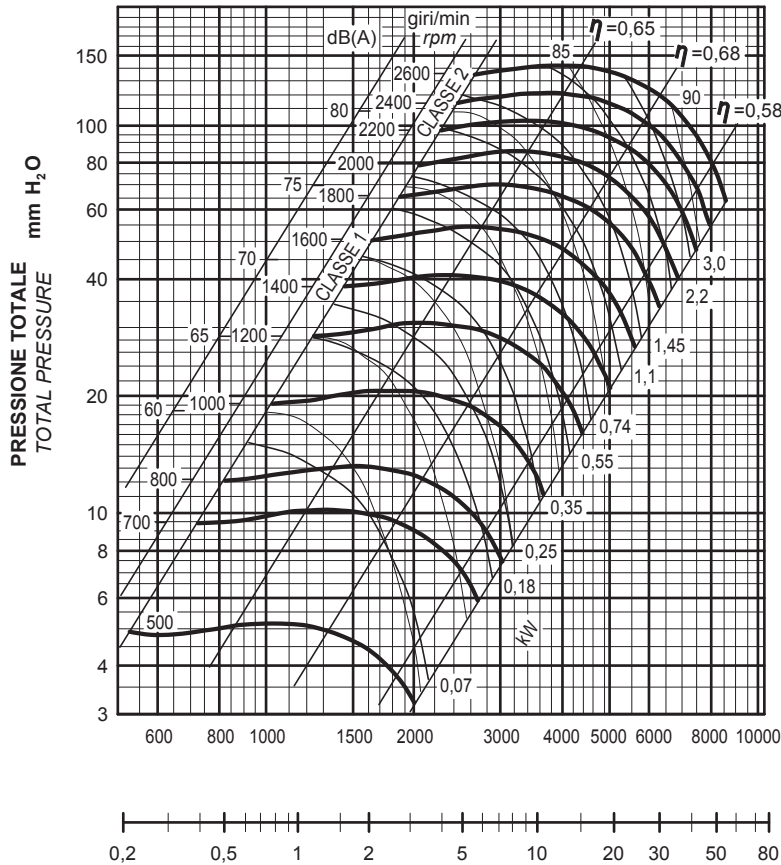
PRESTAZIONI
PERFORMANCES

GIRI MASSIMI AMMISSIBILI
VENTILATORE CLASSE 1 2000 giri/min
VENTILATORE CLASSE 2 2400 giri/min

MAXIMUM ADMISSIBLE ROUNDS
CLASSE 1 FAN TYPE 2000 rpm
CLASSE 2 FAN TYPE 2400 rpm

TOLLERANZA SULLA RUMOROSITA' +3 dB(A)
TOLLERANZA SULLA POTENZA ASSORBITA ±3%

NOISE LEVEL TOLERANCE +3 dB(A)
ABSORBED POWER TOLERANCE ±3%



PORTATA m³/min
CAPACITY m³/h

PRESSIONE DINAMICA mm H₂O
DYNAMIC PRESSURE

DMD-T 10/8

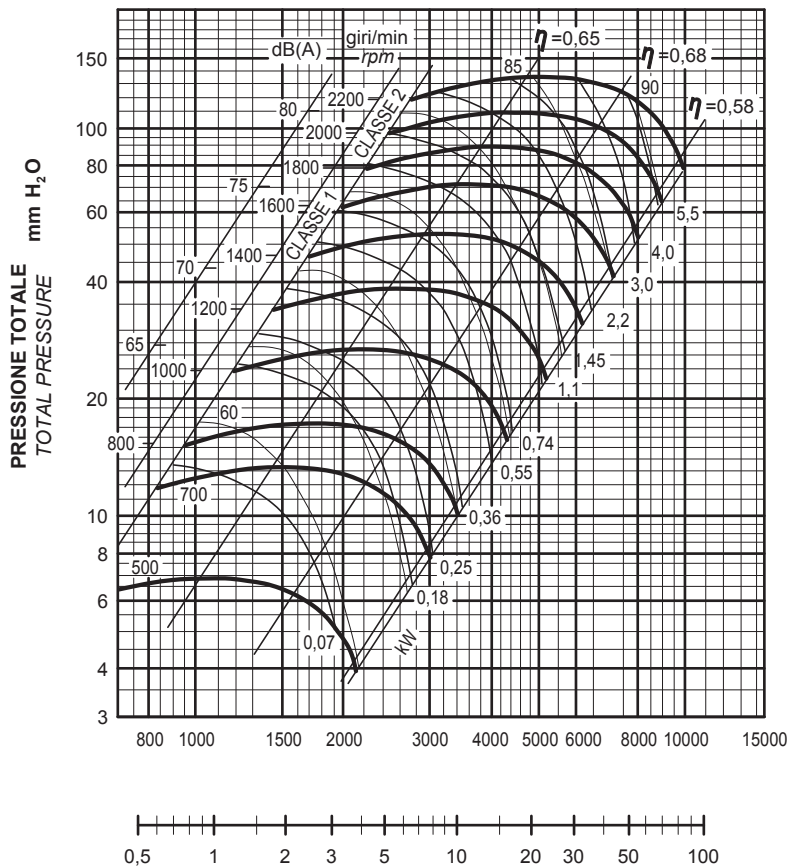
PRESTAZIONI
PERFORMANCES

GIRI MASSIMI AMMISSIBILI
VENTILATORE CLASSE 1 1800 giri/min
VENTILATORE CLASSE 2 2200 giri/min

MAXIMUM ADMISSIBLE ROUNDS
CLASSE 1 FAN TYPE 1800 rpm
CLASSE 2 FAN TYPE 2200 rpm

TOLLERANZA SULLA RUMOROSITA' +3 dB(A)
TOLLERANZA SULLA POTENZA ASSORBITA ±3%

NOISE LEVEL TOLERANCE +3 dB(A)
ABSORBED POWER TOLERANCE ±3%



PORTATA m³/min
CAPACITY m³/h

PRESSIONE DINAMICA mm H₂O
DYNAMIC PRESSURE

DMD-T 10/10

PRESTAZIONI
PERFORMANCES

GIRI MASSIMI AMMISSIBILI
VENTILATORE CLASSE 1 1800 giri/min
VENTILATORE CLASSE 2 2200 giri/min

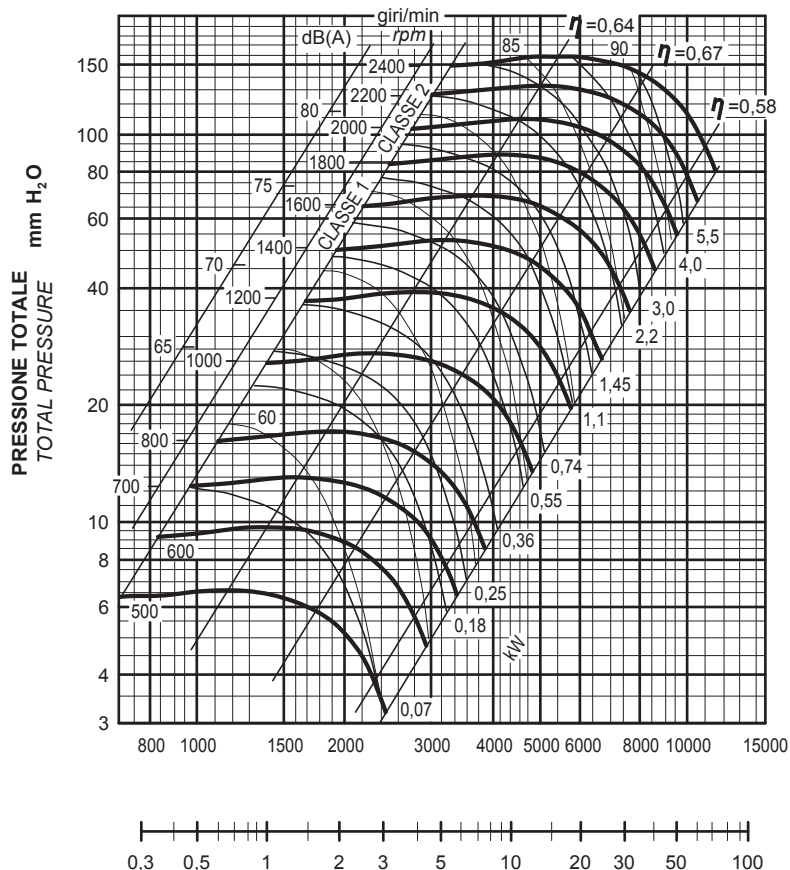
MAXIMUM ADMISSIBLE ROUNDS
CLASSE 1 FAN TYPE 1800 rpm
CLASSE 2 FAN TYPE 2200 rpm

TOLLERANZA SULLA RUMOROSITA' +3 dB(A)
TOLLERANZA SULLA POTENZA ASSORBITA ±3%

NOISE LEVEL TOLERANCE +3 dB(A)
ABSORBED POWER TOLERANCE ±3%

PORTATA m³/min
CAPACITY m³/h

PRESSIONE DINAMICA mm H₂O
DYNAMIC PRESSURE



DMD-T 12/9

PRESTAZIONI
PERFORMANCES

GIRI MASSIMI AMMISSIBILI
VENTILATORE CLASSE 1 1500 giri/min
VENTILATORE CLASSE 2 1900 giri/min

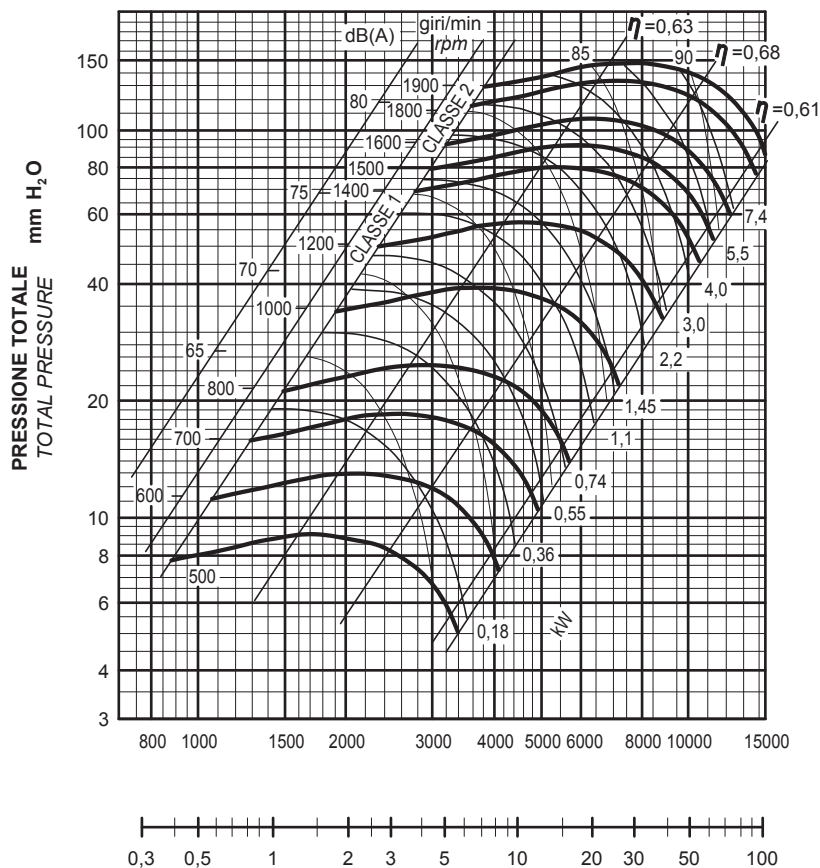
MAXIMUM ADMISSIBLE ROUNDS
CLASSE 1 FAN TYPE 1500 rpm
CLASSE 2 FAN TYPE 1900 rpm

TOLLERANZA SULLA RUMOROSITA' +3 dB(A)
TOLLERANZA SULLA POTENZA ASSORBITA ±3%

NOISE LEVEL TOLERANCE +3 dB(A)
ABSORBED POWER TOLERANCE ±3%

PORTATA m³/min
CAPACITY m³/h

PRESSIONE DINAMICA mm H₂O
DYNAMIC PRESSURE



DMD-T 12/12

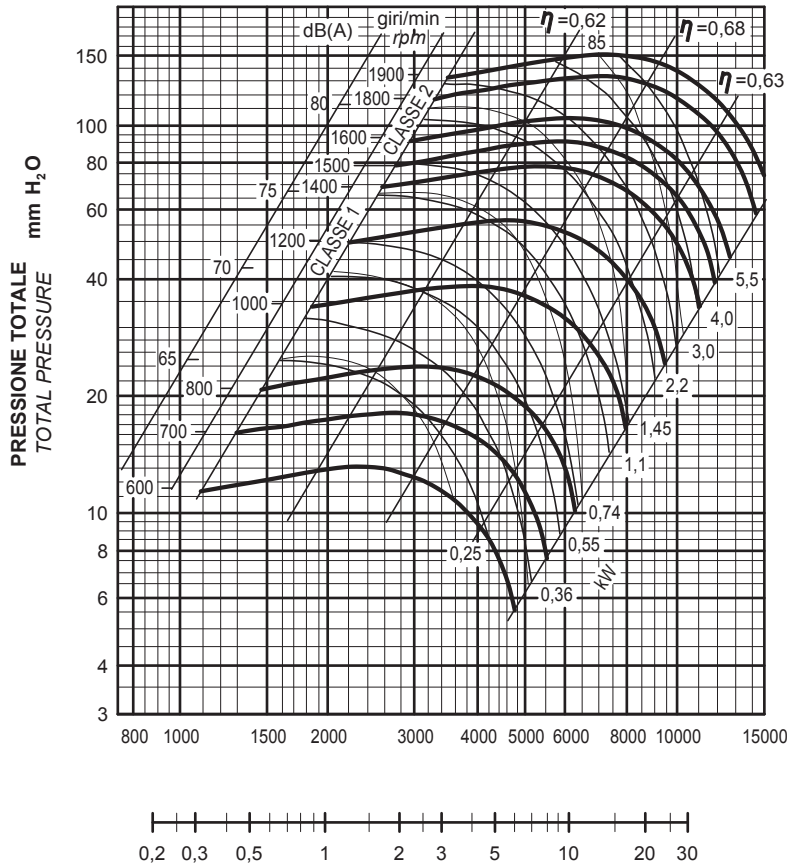
PRESTAZIONI
PERFORMANCES

GIRI MASSIMI AMMISSIBILI
VENTILATORE CLASSE 1 1500 giri/min
VENTILATORE CLASSE 2 1800 giri/min

MAXIMUM ADMISSIBLE ROUNDS
CLASSE 1 FAN TYPE 1500 rpm
CLASSE 2 FAN TYPE 1800 rpm

TOLLERANZA SULLA RUMOROSITA' +3 dB(A)
TOLLERANZA SULLA POTENZA ASSORBITA ±3%

NOISE LEVEL TOLERANCE +3 dB(A)
ABSORBED POWER TOLERANCE ±3%



PORTATA m³/min
CAPACITY m³/h

PRESSIONE DINAMICA mm H₂O
DYNAMIC PRESSURE

DMD-T 15/11

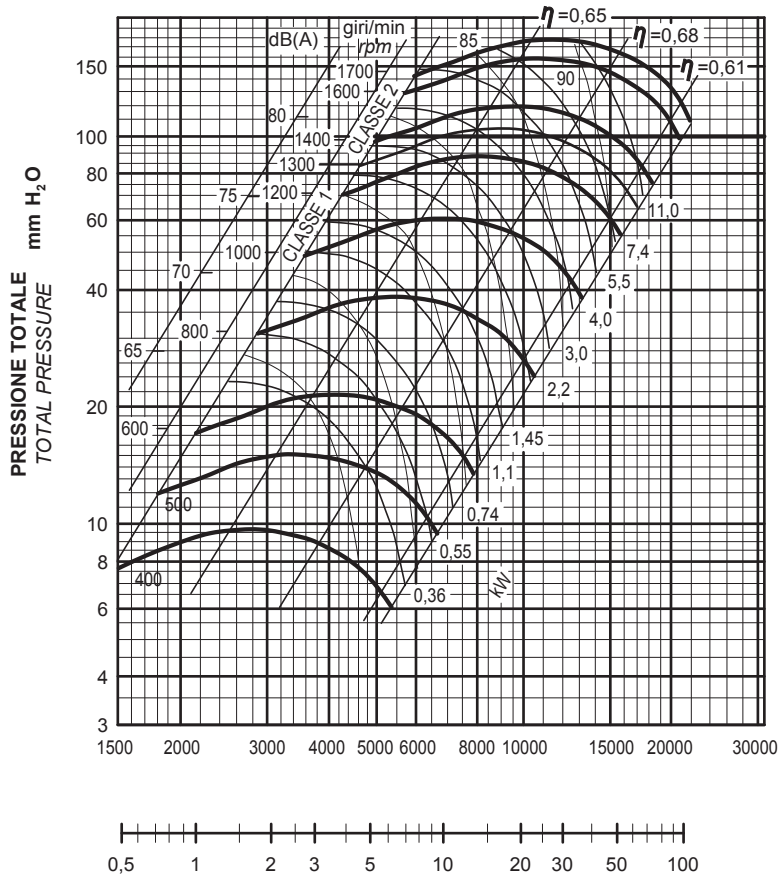
PRESTAZIONI
PERFORMANCES

GIRI MASSIMI AMMISSIBILI
VENTILATORE CLASSE 1 1200 giri/min
VENTILATORE CLASSE 2 1500 giri/min

MAXIMUM ADMISSIBLE ROUNDS
CLASSE 1 FAN TYPE 1200 rpm
CLASSE 2 FAN TYPE 1500 rpm

TOLLERANZA SULLA RUMOROSITA' +3 dB(A)
TOLLERANZA SULLA POTENZA ASSORBITA ±3%

NOISE LEVEL TOLERANCE +3 dB(A)
ABSORBED POWER TOLERANCE ±3%



PORTATA m³/min
CAPACITY m³/h

PRESSIONE DINAMICA mm H₂O
DYNAMIC PRESSURE

DMD-T 15/15

PRESTAZIONI
PERFORMANCES

GIRI MASSIMI AMMISSIBILI
VENTILATORE CLASSE 1 1300 giri/min
VENTILATORE CLASSE 2 1700 giri/min

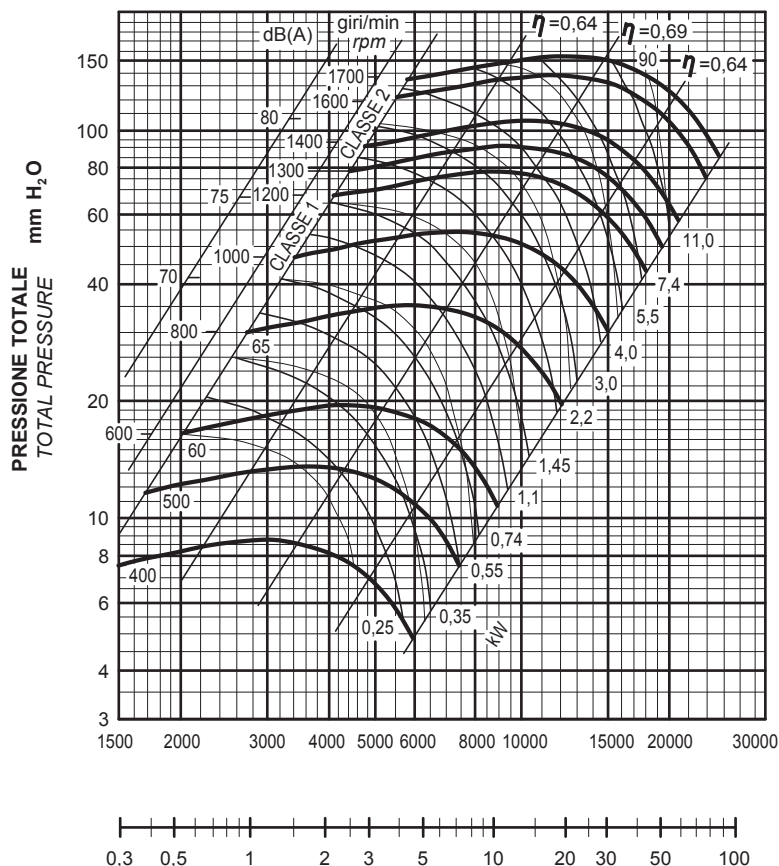
MAXIMUM ADMISSIBLE ROUNDS
CLASSE 1 FAN TYPE 1300 rpm
CLASSE 2 FAN TYPE 1700 rpm

TOLLERANZA SULLA RUMOROSITA' +3 dB(A)
TOLLERANZA SULLA POTENZA ASSORBITA ±3%

NOISE LEVEL TOLERANCE +3 dB(A)
ABSORBED POWER TOLERANCE ±3%

PORTATA m^3/min
CAPACITY m^3/h

PRESSIONE DINAMICA $mm H_2O$
DYNAMIC PRESSURE



DMD-T 18/13

PRESTAZIONI
PERFORMANCES

GIRI MASSIMI AMMISSIBILI
VENTILATORE CLASSE 1 1000 giri/min
VENTILATORE CLASSE 2 1300 giri/min

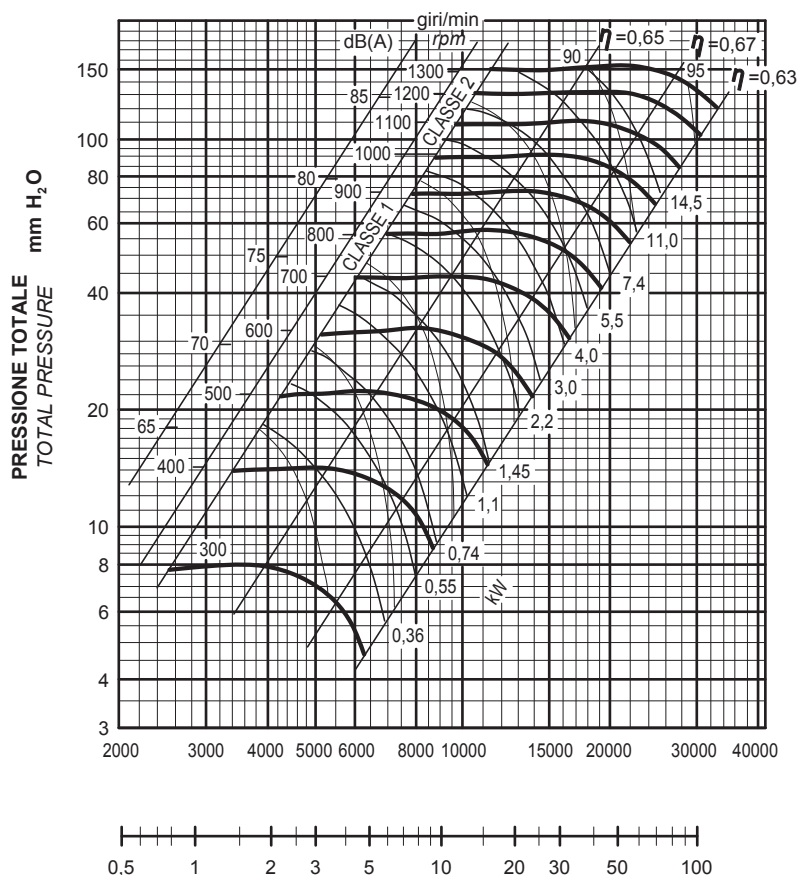
MAXIMUM ADMISSIBLE ROUNDS
CLASSE 1 FAN TYPE 1000 rpm
CLASSE 2 FAN TYPE 1300 rpm

TOLLERANZA SULLA RUMOROSITA' +3 dB(A)
TOLLERANZA SULLA POTENZA ASSORBITA ±3%

NOISE LEVEL TOLERANCE +3 dB(A)
ABSORBED POWER TOLERANCE ±3%

PORTATA m^3/min
CAPACITY m^3/h

PRESSIONE DINAMICA $mm H_2O$
DYNAMIC PRESSURE



DMD-T 18/18

PRESTAZIONI
PERFORMANCES

GIRI MASSIMI AMMISSIBILI
VENTILATORE CLASSE 1 1000 giri/min
VENTILATORE CLASSE 2 1300 giri/min

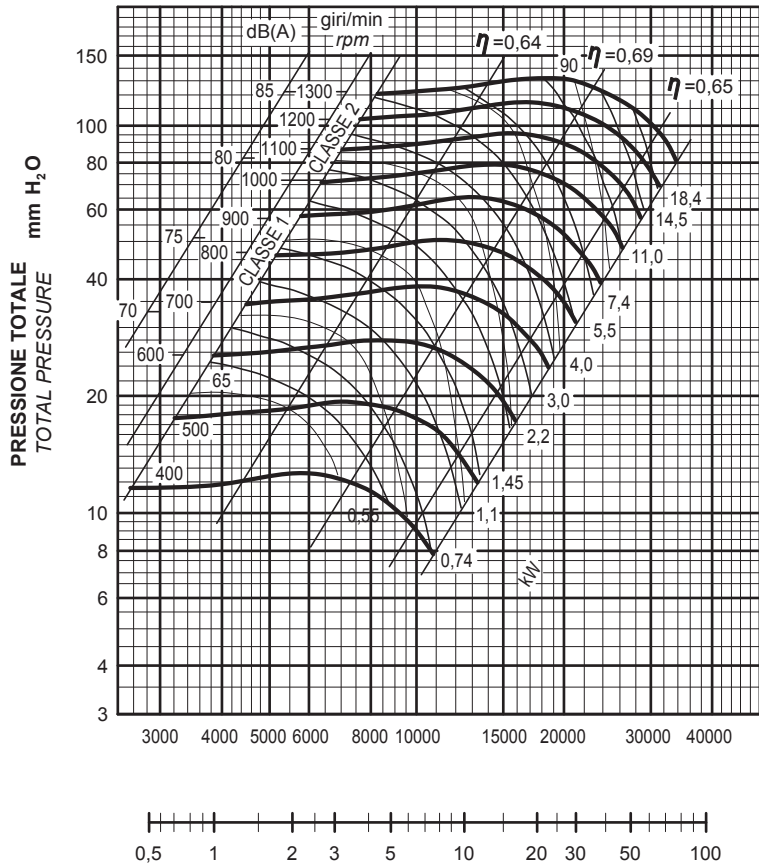
MAXIMUM ADMISSIBLE ROUNDS
CLASSE 1 FAN TYPE 1000 rpm
CLASSE 2 FAN TYPE 1300 rpm

TOLLERANZA SULLA RUMOROSITA' +3 dB(A)
TOLLERANZA SULLA POTENZA ASSORBITA ±3%

NOISE LEVEL TOLERANCE +3 dB(A)
ABSORBED POWER TOLERANCE ±3%

PORTATA m³/min
CAPACITY m³/h

PRESSIONE DINAMICA mm H₂O
DYNAMIC PRESSURE



DMD-T 20/15

PRESTAZIONI
PERFORMANCES

GIRI MASSIMI AMMISSIBILI
VENTILATORE CLASSE 1 1000 giri/min
VENTILATORE CLASSE 2 1200 giri/min

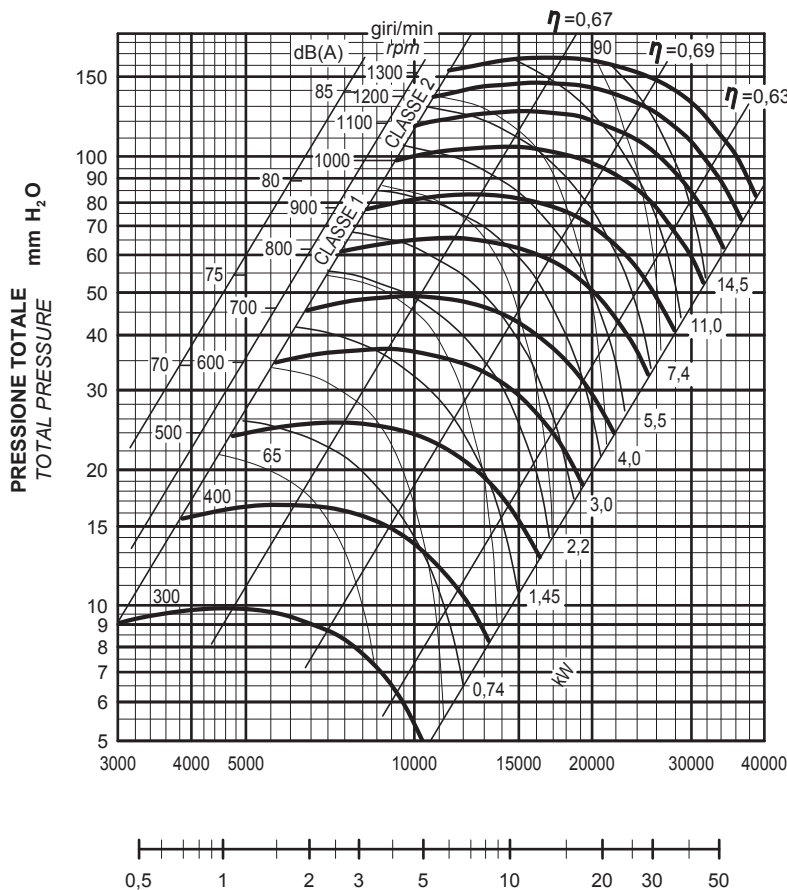
MAXIMUM ADMISSIBLE ROUNDS
CLASSE 1 FAN TYPE 1000 rpm
CLASSE 2 FAN TYPE 1200 rpm

TOLLERANZA SULLA RUMOROSITA' +3 dB(A)
TOLLERANZA SULLA POTENZA ASSORBITA ±3%

NOISE LEVEL TOLERANCE +3 dB(A)
ABSORBED POWER TOLERANCE ±3%

PORTATA m³/min
CAPACITY m³/h

PRESSIONE DINAMICA mm H₂O
DYNAMIC PRESSURE



DMD-T 20/20

PRESTAZIONI
PERFORMANCES

GIRI MASSIMI AMMISSIBILI
VENTILATORE CLASSE 1 1000 giri/min
VENTILATORE CLASSE 2 1200 giri/min

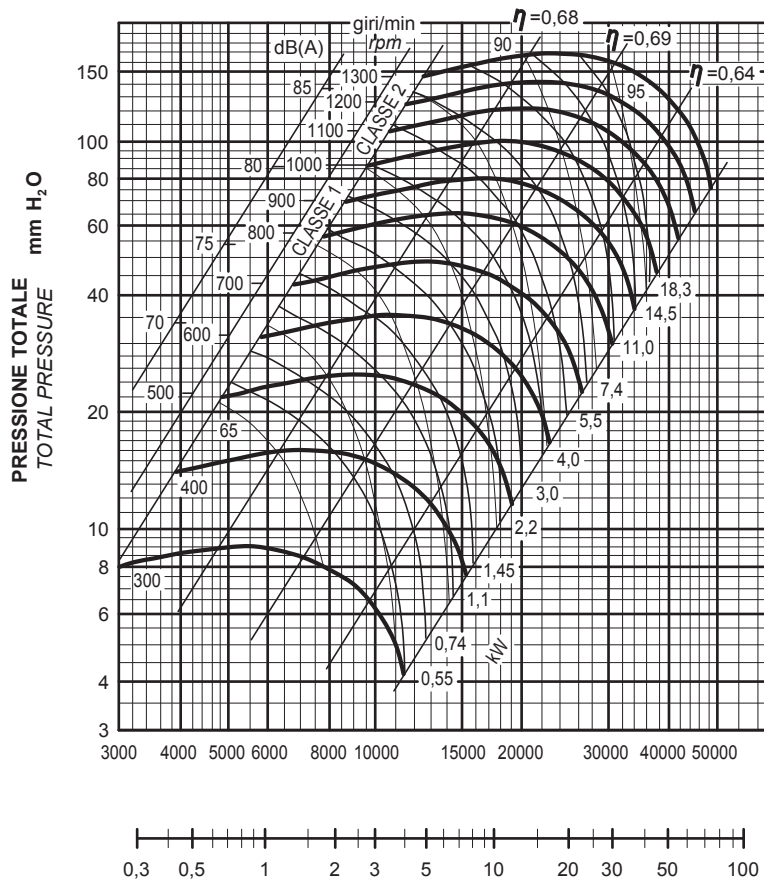
MAXIMUM ADMISSIBLE ROUNDS
CLASSE 1 FAN TYPE 1000 rpm
CLASSE 2 FAN TYPE 1200 rpm

TOLLERANZA SULLA RUMOROSITA' +3 dB(A)
TOLLERANZA SULLA POTENZA ASSORBITA ±3%

NOISE LEVEL TOLERANCE +3 dB(A)
ABSORBED POWER TOLERANCE ±3%

PORTATA m^3/min
CAPACITY m^3/h

PRESSIONE DINAMICA $mm H_2O$
DYNAMIC PRESSURE



DMD-T 22/15

PRESTAZIONI
PERFORMANCES

GIRI MASSIMI AMMISSIBILI
VENTILATORE CLASSE 1 900 giri/min
VENTILATORE CLASSE 2 1100 giri/min

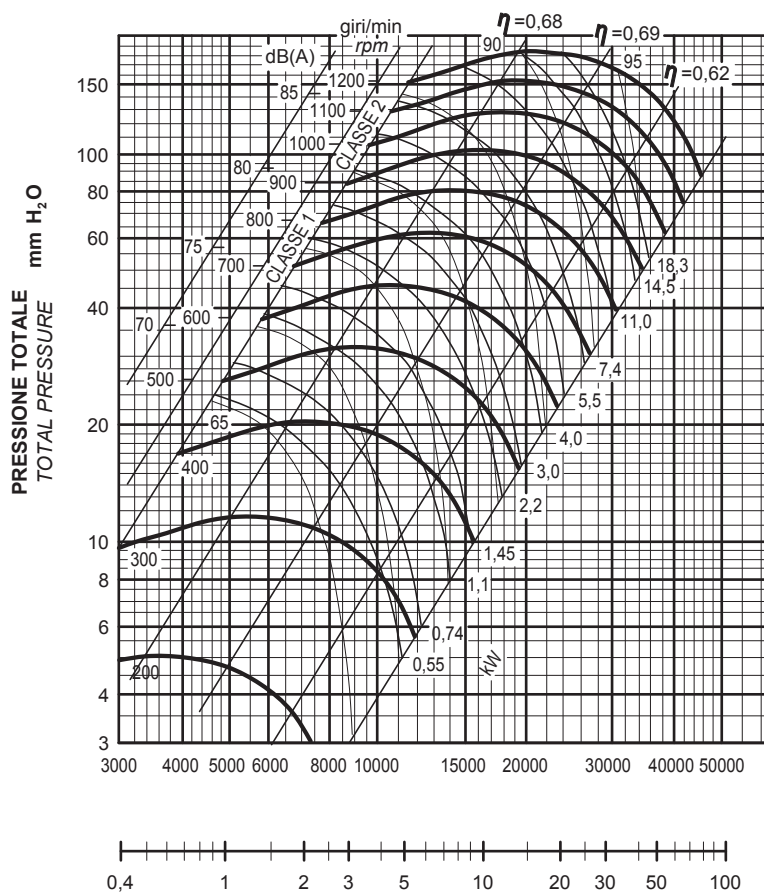
MAXIMUM ADMISSIBLE ROUNDS
CLASSE 1 FAN TYPE 900 rpm
CLASSE 2 FAN TYPE 1100 rpm

TOLLERANZA SULLA RUMOROSITA' +3 dB(A)
TOLLERANZA SULLA POTENZA ASSORBITA ±3%

NOISE LEVEL TOLERANCE +3 dB(A)
ABSORBED POWER TOLERANCE ±3%

PORTATA m^3/min
CAPACITY m^3/h

PRESSIONE DINAMICA $mm H_2O$
DYNAMIC PRESSURE



DMD-T 22/22

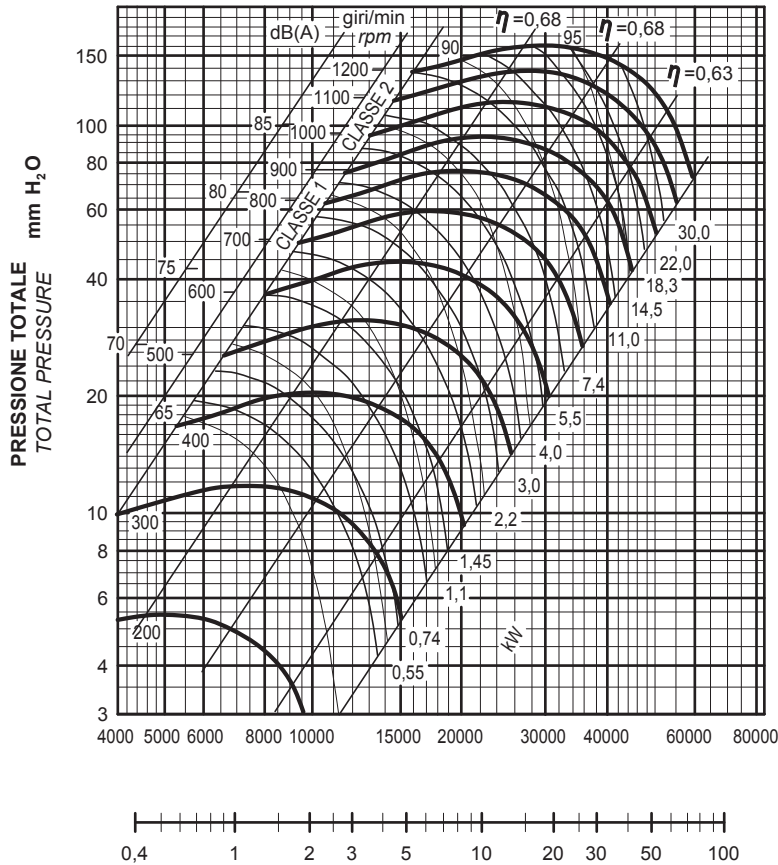
PRESTAZIONI
PERFORMANCES

GIRI MASSIMI AMMISSIBILI
VENTILATORE CLASSE 1 900 giri/min
VENTILATORE CLASSE 2 1100 giri/min

MAXIMUM ADMISSIBLE ROUNDS
CLASSE 1 FAN TYPE 900 rpm
CLASSE 2 FAN TYPE 1100 rpm

TOLLERANZA SULLA RUMOROSITA' +3 dB(A)
TOLLERANZA SULLA POTENZA ASSORBITA ±3%

NOISE LEVEL TOLERANCE +3 dB(A)
ABSORBED POWER TOLERANCE ±3%



PORTATA m³/min
CAPACITY m³/h

PRESSIONE DINAMICA mm H₂O
DYNAMIC PRESSURE

DMD-T 25/20

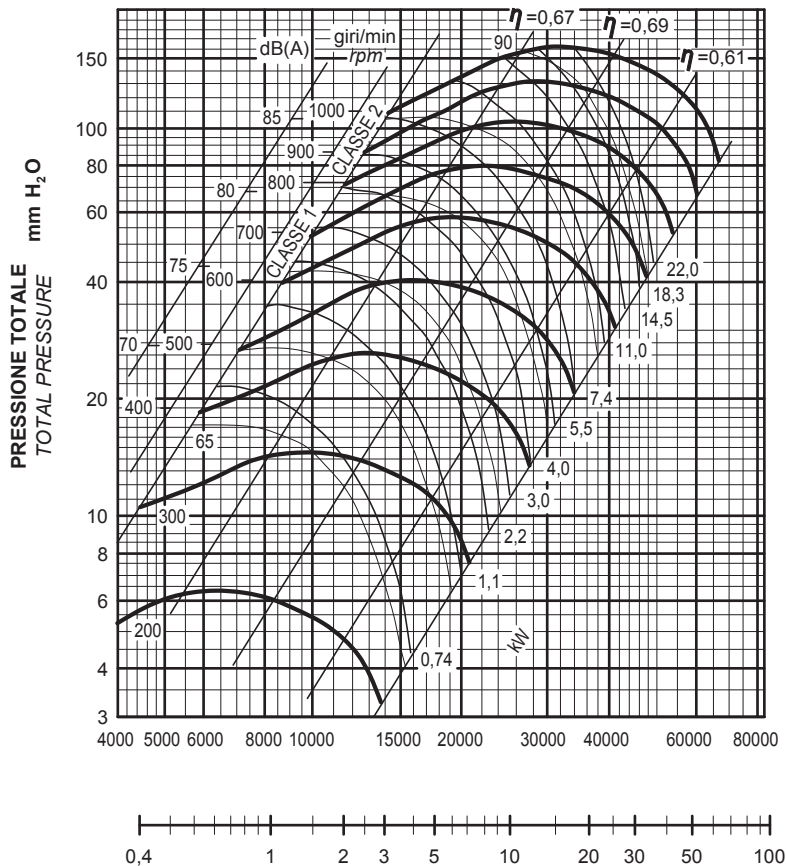
PRESTAZIONI
PERFORMANCES

GIRI MASSIMI AMMISSIBILI
VENTILATORE CLASSE 1 800 giri/min
VENTILATORE CLASSE 2 1000 giri/min

MAXIMUM ADMISSIBLE ROUNDS
CLASSE 1 FAN TYPE 800 rpm
CLASSE 2 FAN TYPE 1000 rpm

TOLLERANZA SULLA RUMOROSITA' +3 dB(A)
TOLLERANZA SULLA POTENZA ASSORBITA ±3%

NOISE LEVEL TOLERANCE +3 dB(A)
ABSORBED POWER TOLERANCE ±3%



PORTATA m³/min
CAPACITY m³/h

PRESSIONE DINAMICA mm H₂O
DYNAMIC PRESSURE

DMD-T 25/25

PRESTAZIONI
PERFORMANCES

GIRI MASSIMI AMMISSIBILI
VENTILATORE CLASSE 1 800 giri/min
VENTILATORE CLASSE 2 1000 giri/min

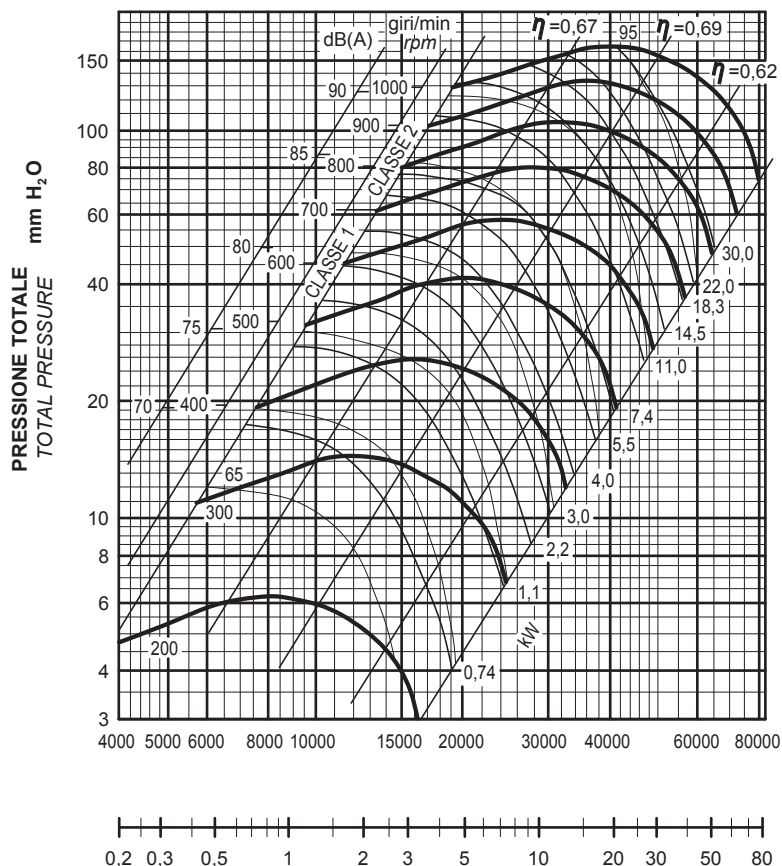
MAXIMUM ADMISSIBLE ROUNDS
CLASSE 1 FAN TYPE 800 rpm
CLASSE 2 FAN TYPE 1000 rpm

TOLLERANZA SULLA RUMOROSITA' +3 dB(A)
TOLLERANZA SULLA POTENZA ASSORBITA ±3%

NOISE LEVEL TOLERANCE +3 dB(A)
ABSORBED POWER TOLERANCE ±3%

PORTATA m³/min
CAPACITY m³/h

PRESSIONE DINAMICA mm H₂O
DYNAMIC PRESSURE



DMD-T 28/20

PRESTAZIONI
PERFORMANCES

GIRI MASSIMI AMMISSIBILI
VENTILATORE CLASSE 1 700 giri/min
VENTILATORE CLASSE 2 800 giri/min

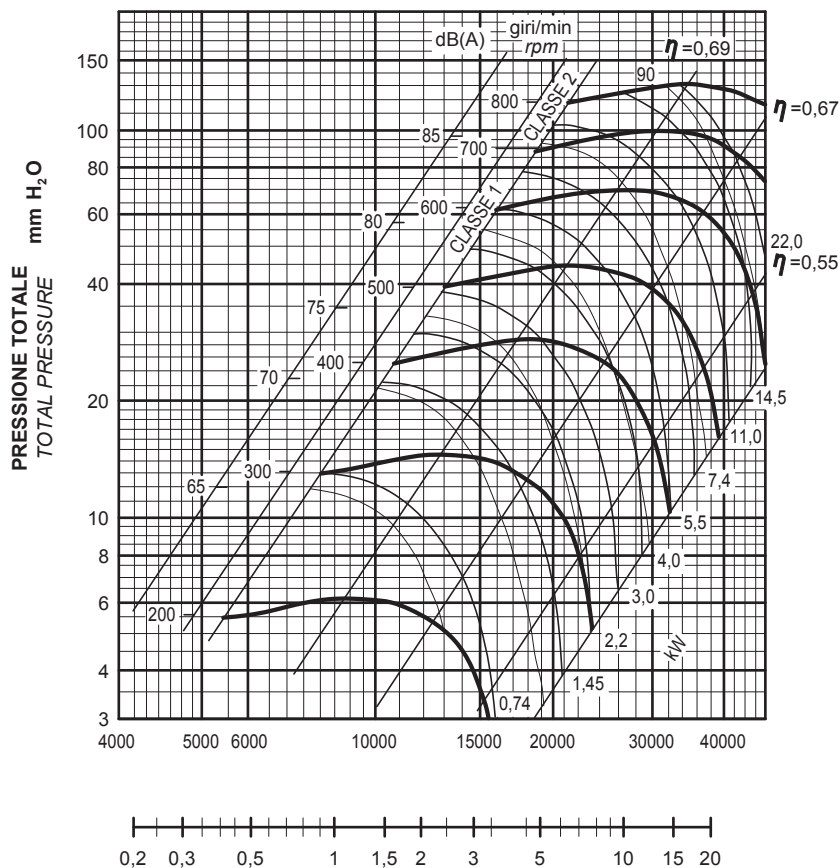
MAXIMUM ADMISSIBLE ROUNDS
CLASSE 1 FAN TYPE 700 rpm
CLASSE 2 FAN TYPE 800 rpm

TOLLERANZA SULLA RUMOROSITA' +3 dB(A)
TOLLERANZA SULLA POTENZA ASSORBITA ±3%

NOISE LEVEL TOLERANCE +3 dB(A)
ABSORBED POWER TOLERANCE ±3%

PORTATA m³/min
CAPACITY m³/h

PRESSIONE DINAMICA mm H₂O
DYNAMIC PRESSURE



DMD-T 28/28

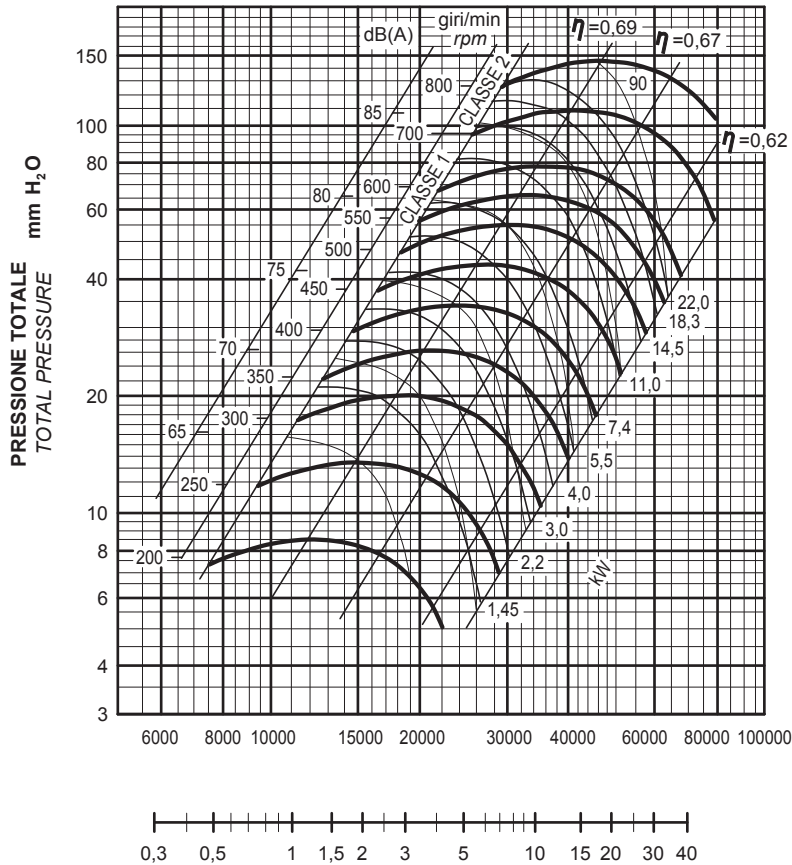
PRESTAZIONI
PERFORMANCES

GIRI MASSIMI AMMISSIBILI
VENTILATORE CLASSE 1 700 giri/min
VENTILATORE CLASSE 2 800 giri/min

MAXIMUM ADMISSIBLE ROUNDS
CLASSE 1 FAN TYPE 700 rpm
CLASSE 2 FAN TYPE 800 rpm

TOLLERANZA SULLA RUMOROSITA' +3 dB(A)
TOLLERANZA SULLA POTENZA ASSORBITA ±3%

NOISE LEVEL TOLERANCE +3 dB(A)
ABSORBED POWER TOLERANCE ±3%



PORTATA m³/min
CAPACITY m³/h

PRESSIONE DINAMICA mm H₂O
DYNAMIC PRESSURE

DMD-T 30/22

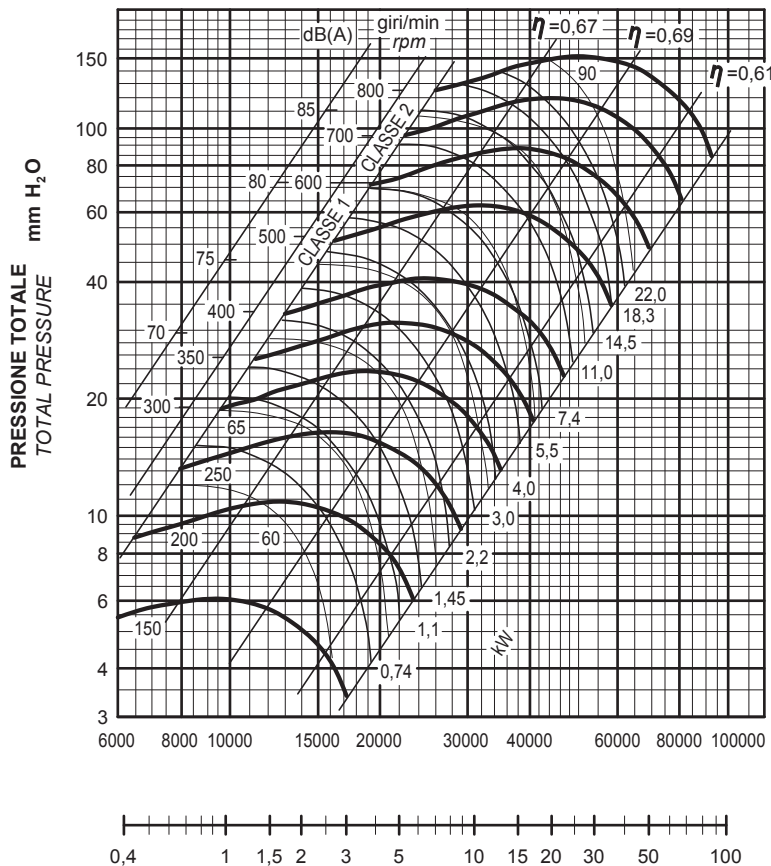
PRESTAZIONI
PERFORMANCES

GIRI MASSIMI AMMISSIBILI
VENTILATORE CLASSE 1 600 giri/min
VENTILATORE CLASSE 2 800 giri/min

MAXIMUM ADMISSIBLE ROUNDS
CLASSE 1 FAN TYPE 600 rpm
CLASSE 2 FAN TYPE 800 rpm

TOLLERANZA SULLA RUMOROSITA' +3 dB(A)
TOLLERANZA SULLA POTENZA ASSORBITA ±3%

NOISE LEVEL TOLERANCE +3 dB(A)
ABSORBED POWER TOLERANCE ±3%



PORTATA m³/min
CAPACITY m³/h

PRESSIONE DINAMICA mm H₂O
DYNAMIC PRESSURE

DMD-T 30/28

PRESTAZIONI
PERFORMANCES

GIRI MASSIMI AMMISSIBILI
VENTILATORE CLASSE 1 600 giri/min
VENTILATORE CLASSE 2 800 giri/min

MAXIMUM ADMISSIBLE ROUNDS
CLASSE 1 FAN TYPE 600 rpm
CLASSE 2 FAN TYPE 800 rpm

TOLLERANZA SULLA RUMOROSITA' +3 dB(A)
TOLLERANZA SULLA POTENZA ASSORBITA ±3%

NOISE LEVEL TOLERANCE +3 dB(A)
ABSORBED POWER TOLERANCE ±3%

PORTATA m³/min
CAPACITY m³/h

PRESSIONE DINAMICA
DYNAMIC PRESSURE mm H₂O

